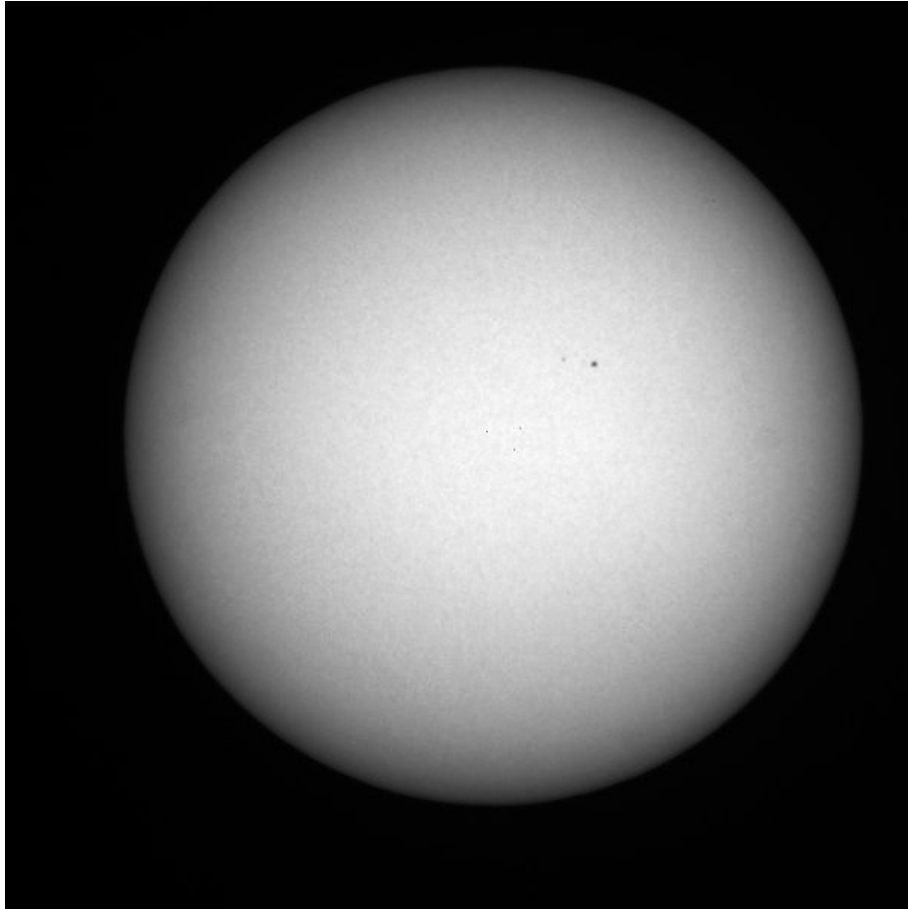
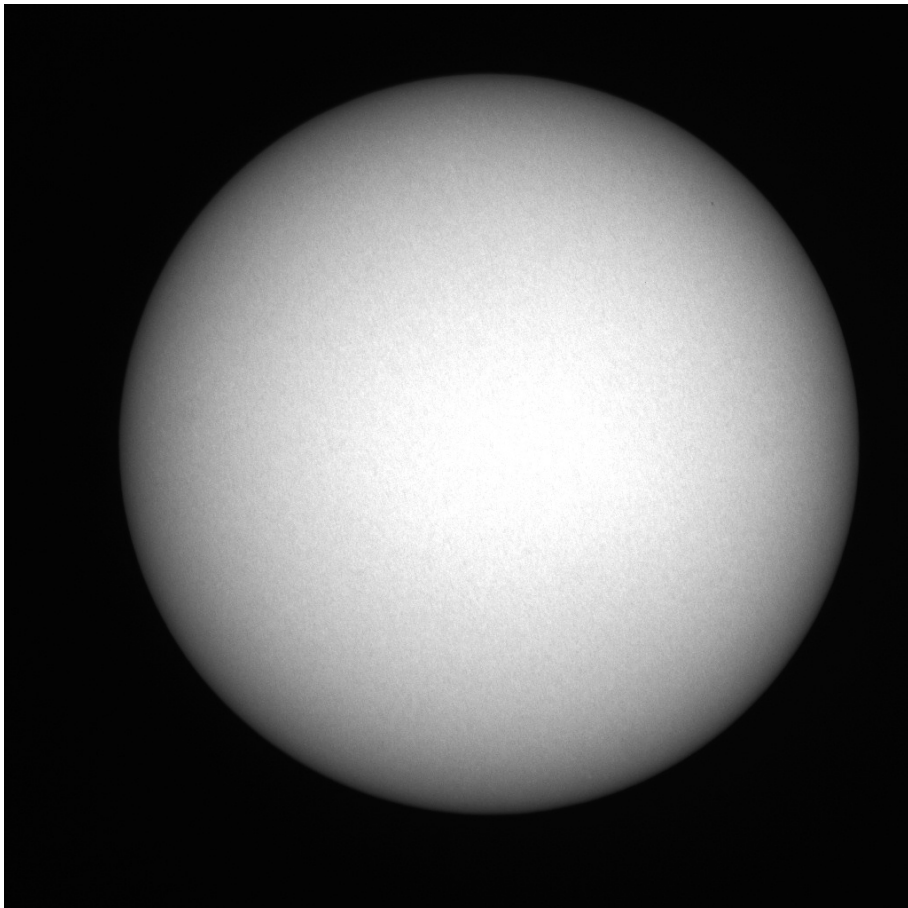


1995: Sonnenfleckenrelativzahl (in 1. Näherung)



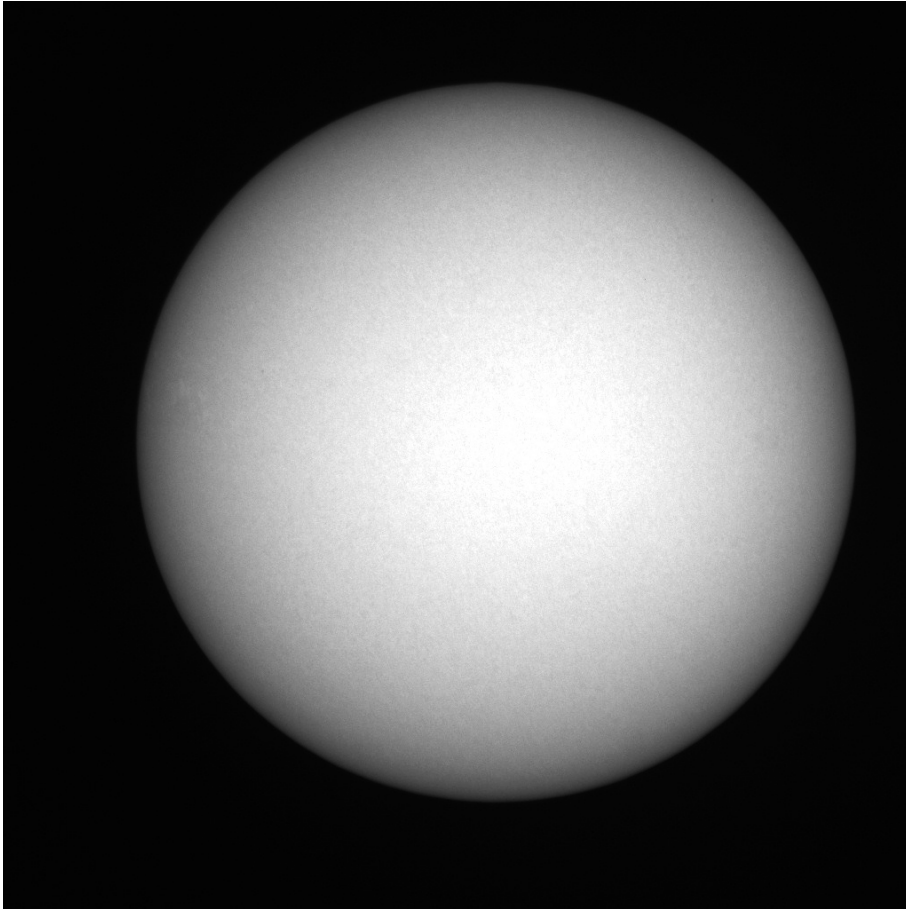
01. 12. 1995



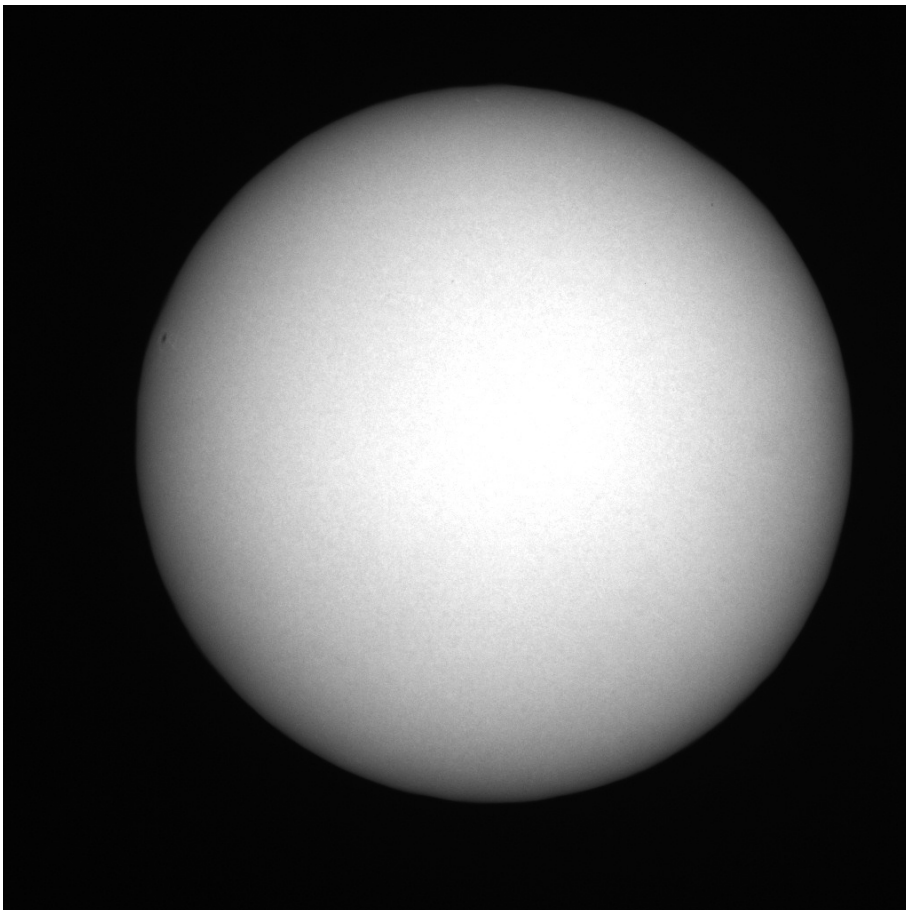
15. 12. 1995

(Datenquelle: C.E.K. Mees Solar Observatory auf Haleakala, Maui, Mees White Light Telescope,
<http://www.solar.ifa.hawaii.edu/MWLT/archive.html>)

1996: Sonnenfleckenrelativzahl (in 1. Näherung)

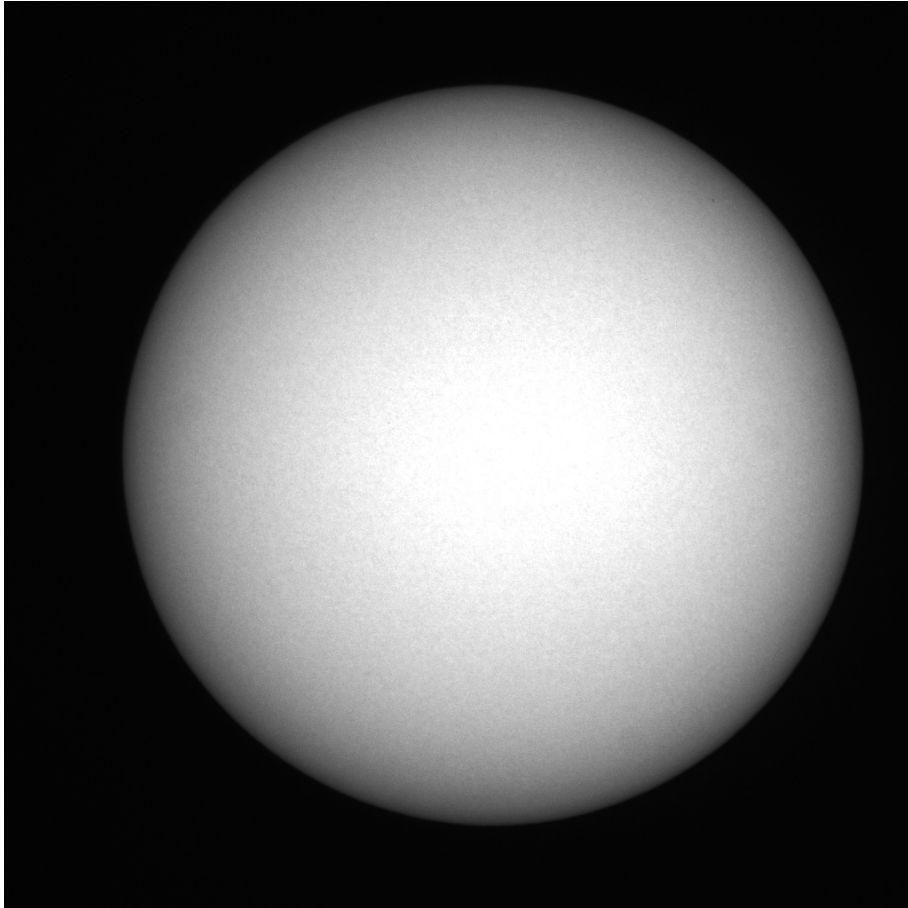


03. 06. 1996

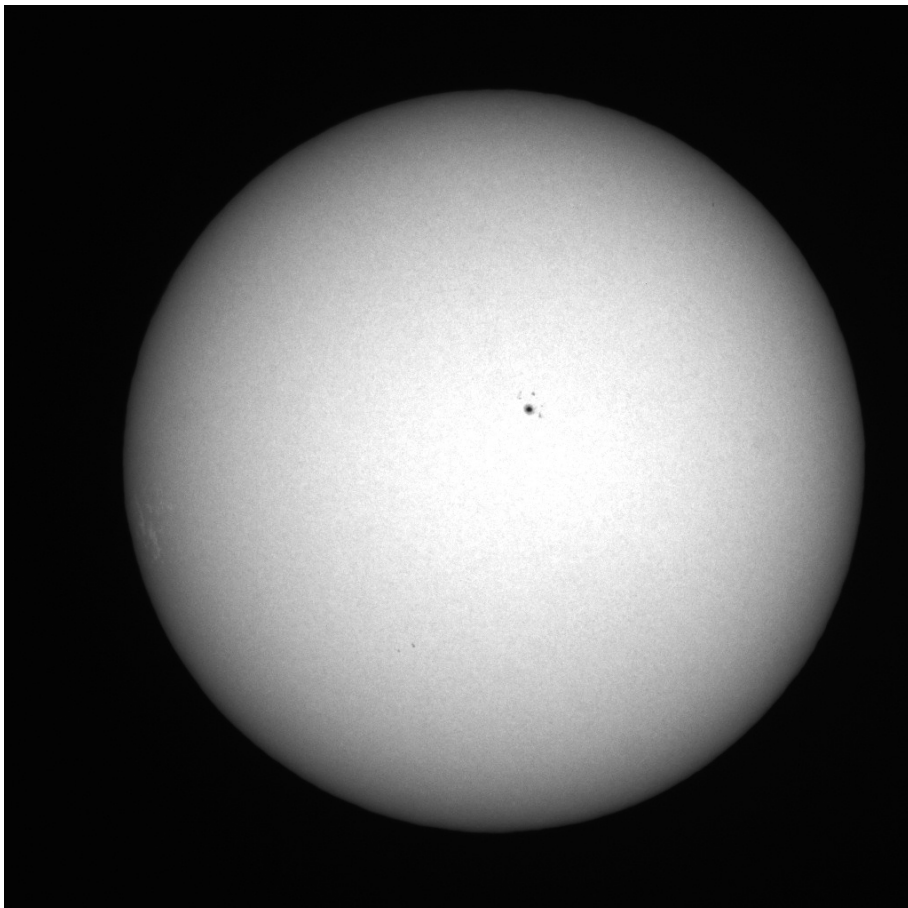


19. 06. 1996

(Datenquelle: C.E.K. Mees Solar Observatory auf Haleakala, Maui, Mees White Light Telescope,
<http://www.solar.ifa.hawaii.edu/MWLT/archive.html>)



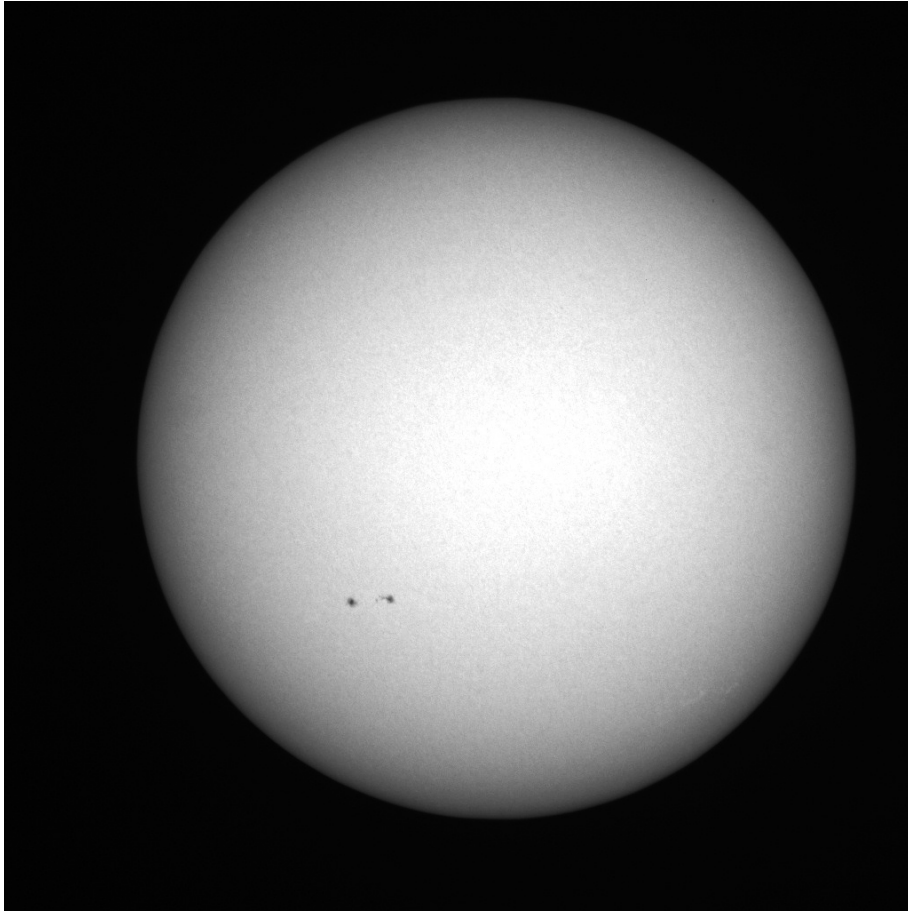
03. 12. 1996



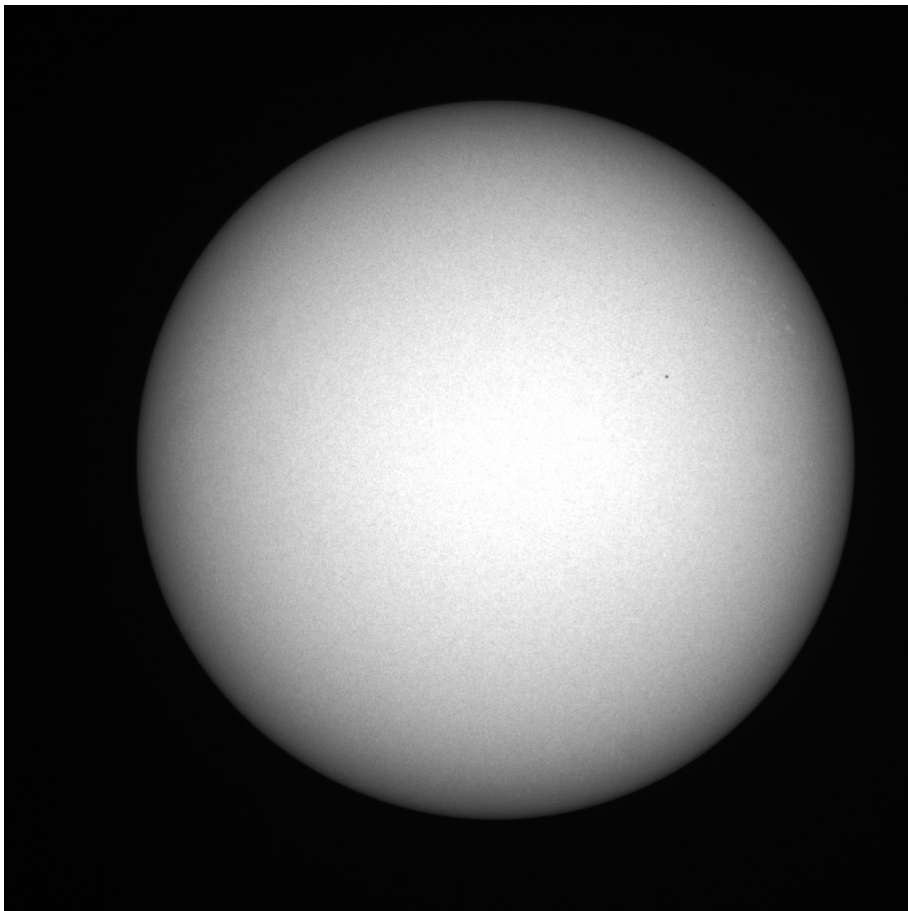
17. 12. 1996

(Datenquelle: C.E.K. Mees Solar Observatory auf Haleakala, Maui, Mees White Light Telescope,
<http://www.solar.ifa.hawaii.edu/MWLT/archive.html>)

1997: Sonnenfleckenrelativzahl (in 1. Näherung)

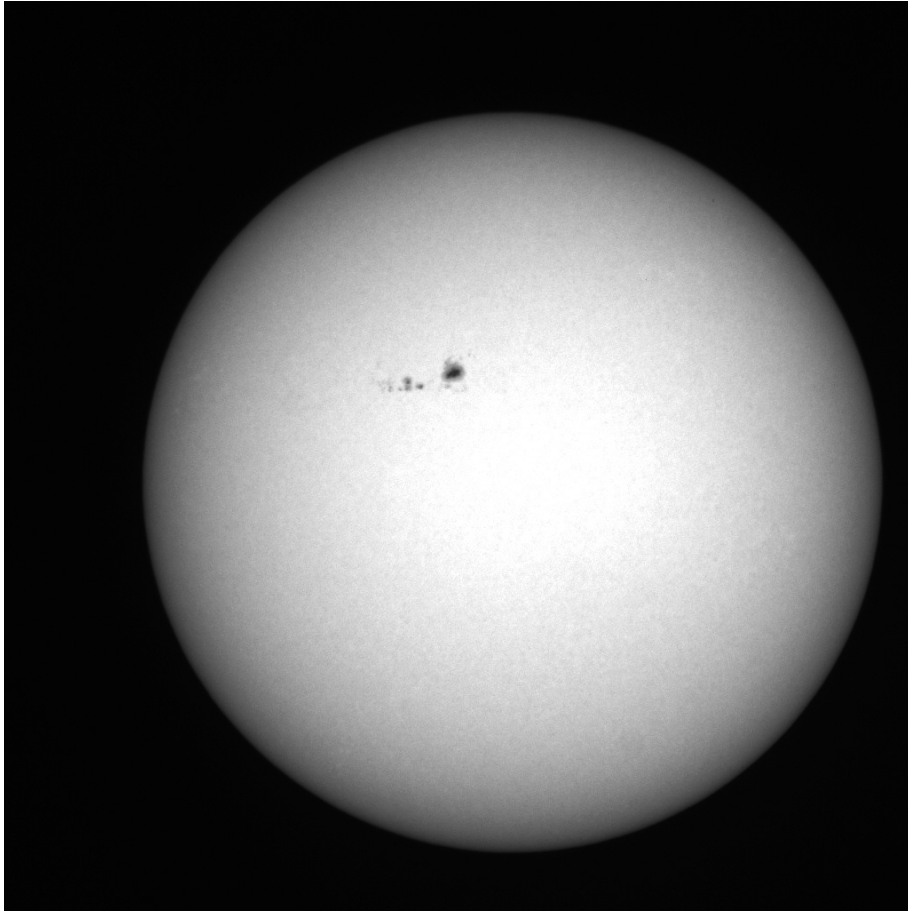


02. 06. 1997

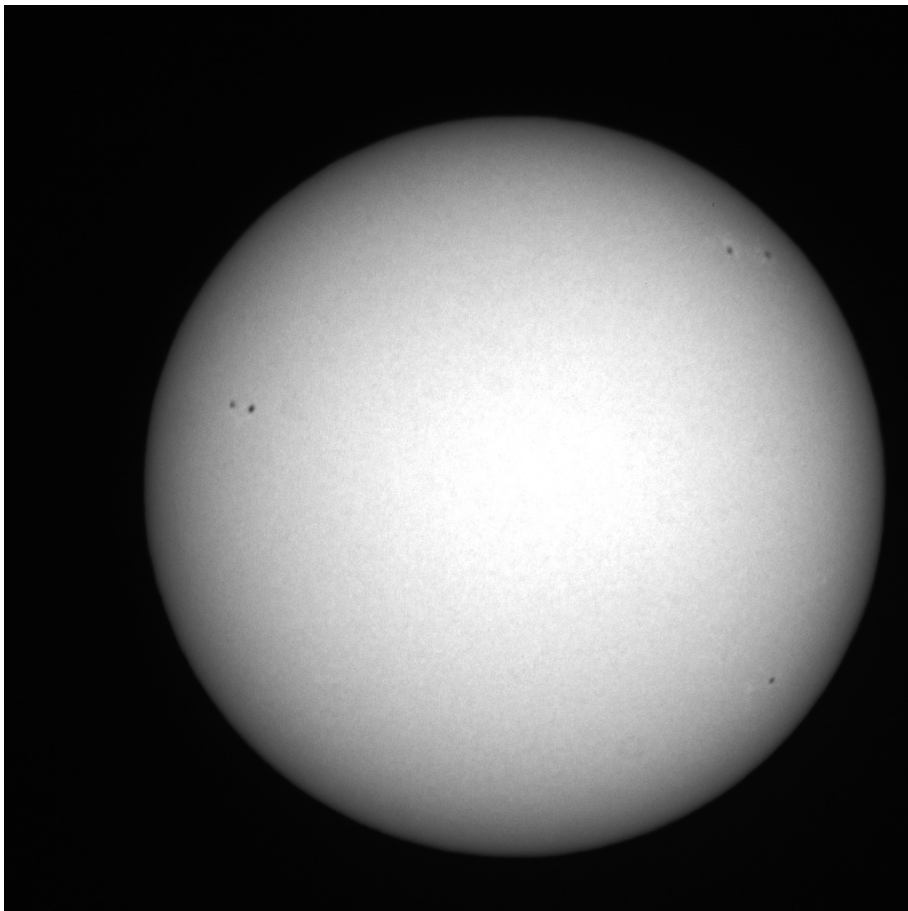


17. 06. 1997

(Datenquelle: C.E.K. Mees Solar Observatory auf Haleakala, Maui, Mees White Light Telescope,
<http://www.solar.ifa.hawaii.edu/MWLT/archive.html>)

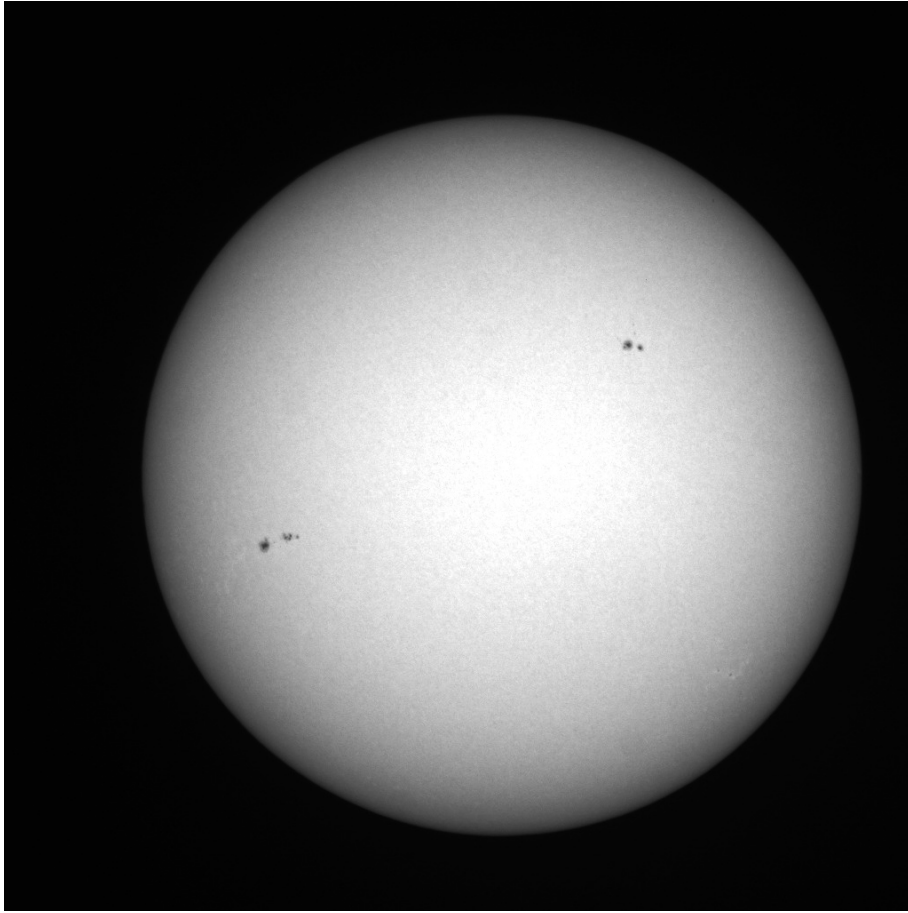


01. 12. 1997

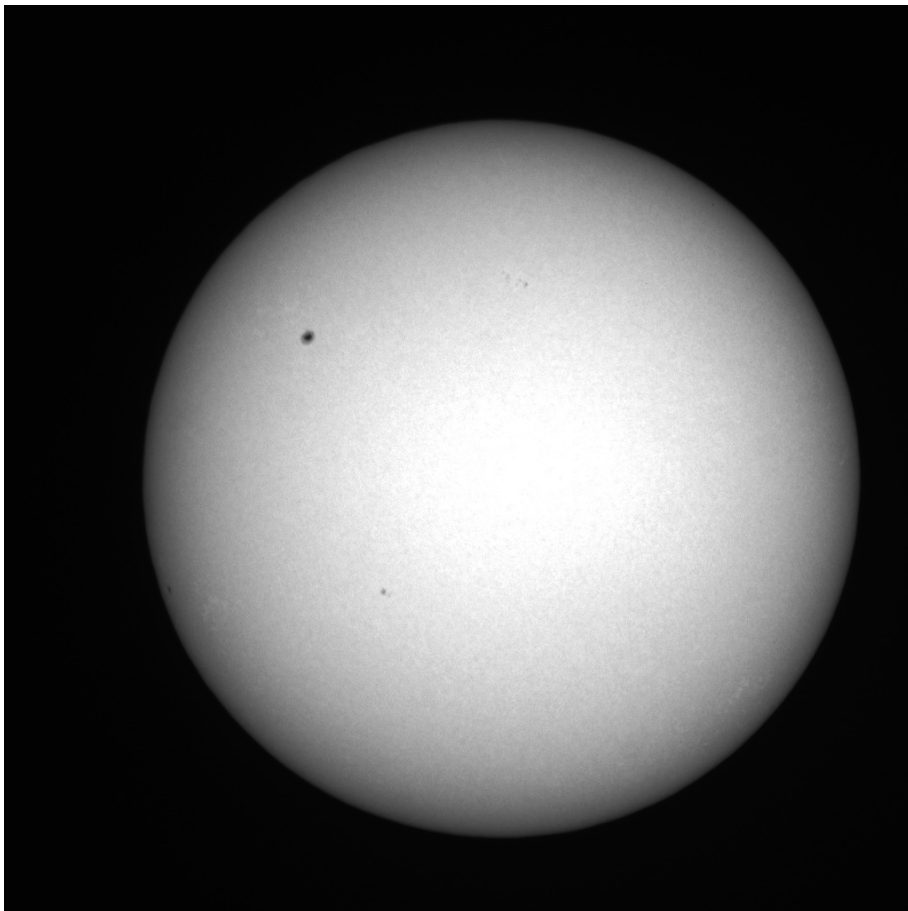


15. 12. 1997

1998: Sonnenfleckenrelativzahl (in 1. Näherung)

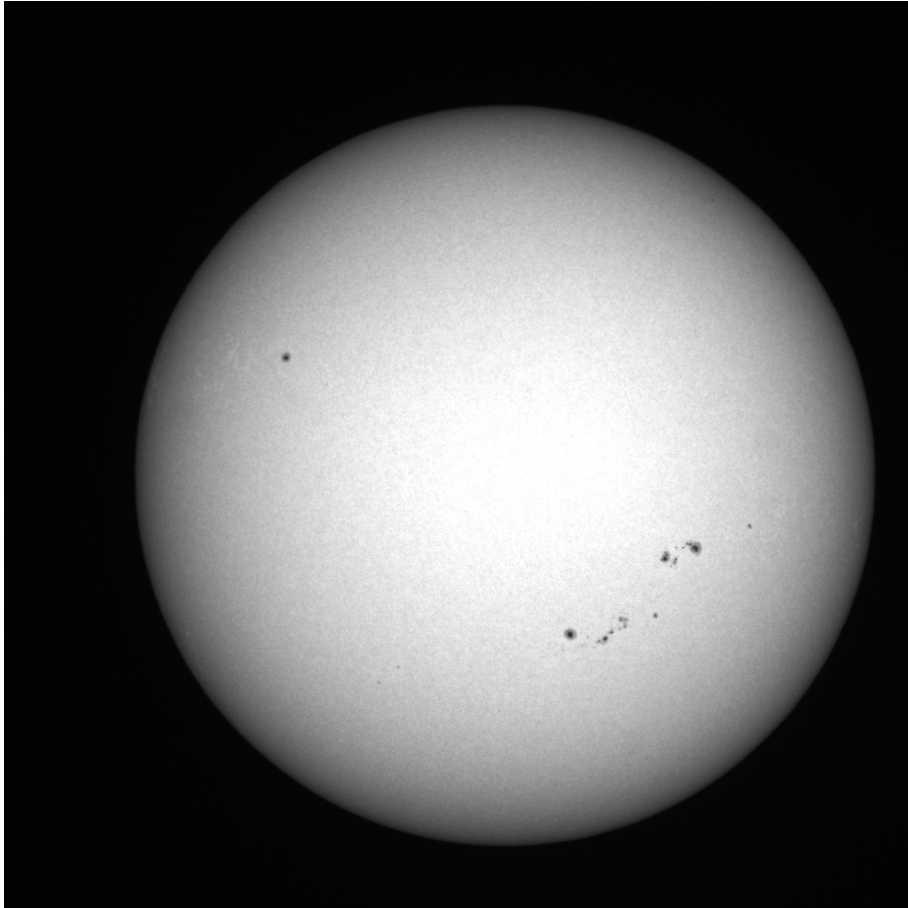


01. 06. 1998

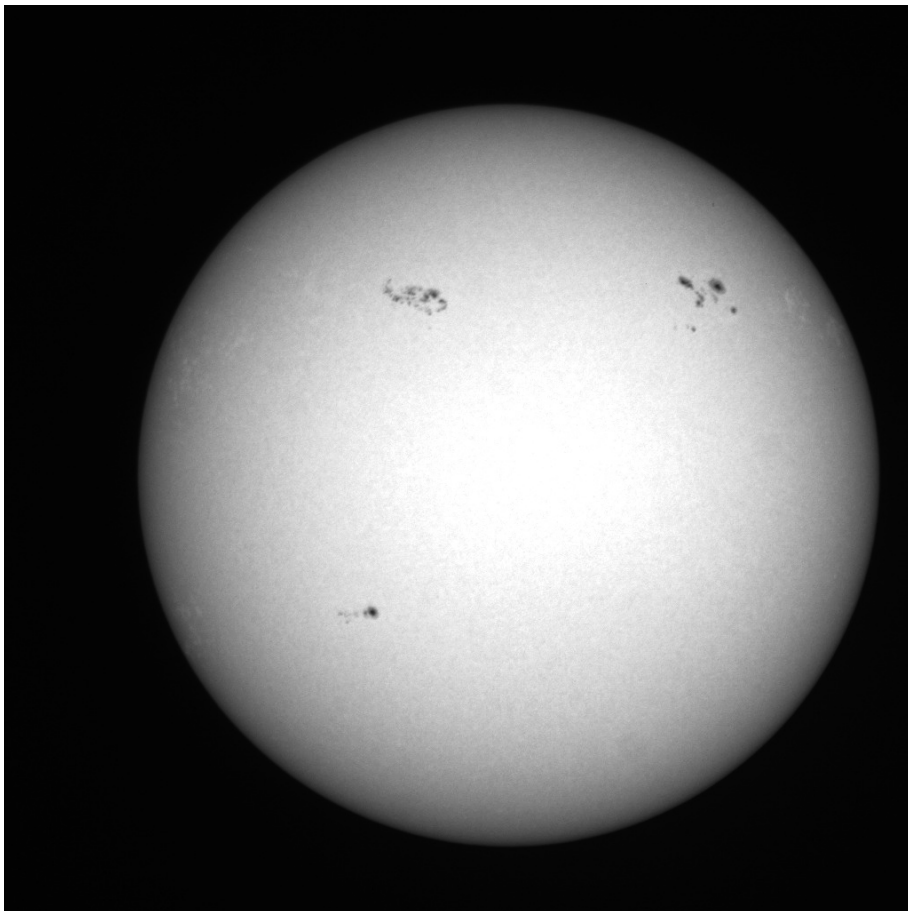


15. 06. 1998

(Datenquelle: C.E.K. Mees Solar Observatory auf Haleakala, Maui, Mees White Light Telescope,
<http://www.solar.ifa.hawaii.edu/MWLT/archive.html>)



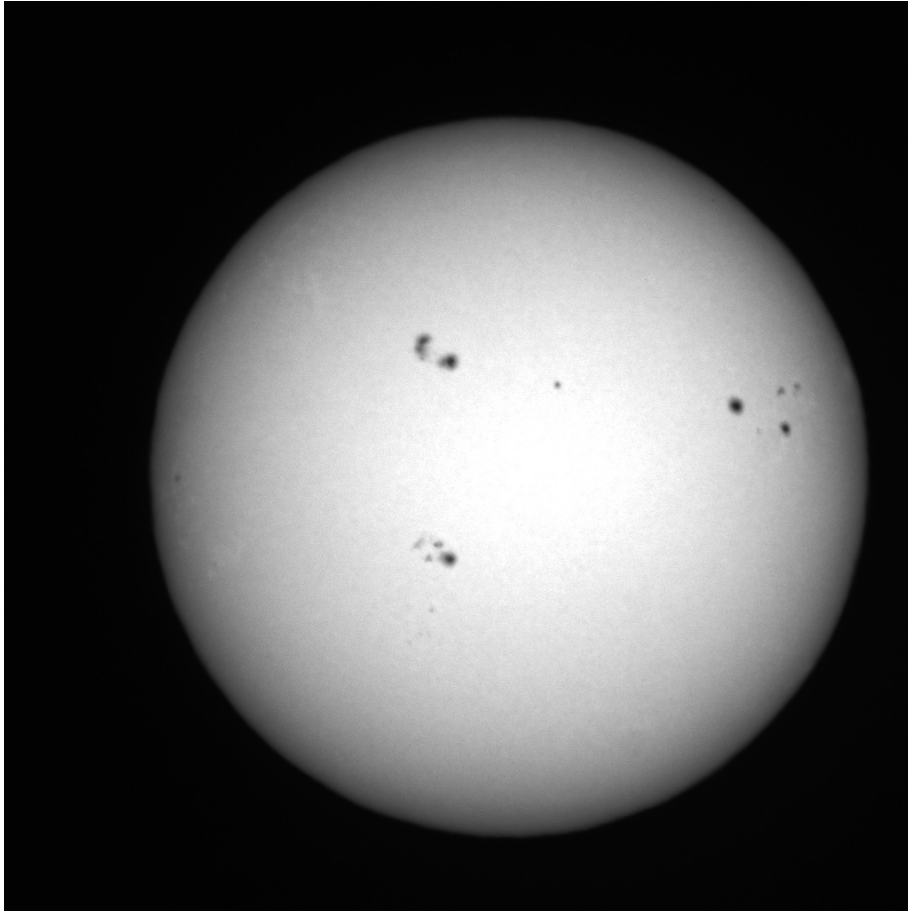
14. 12. 1998



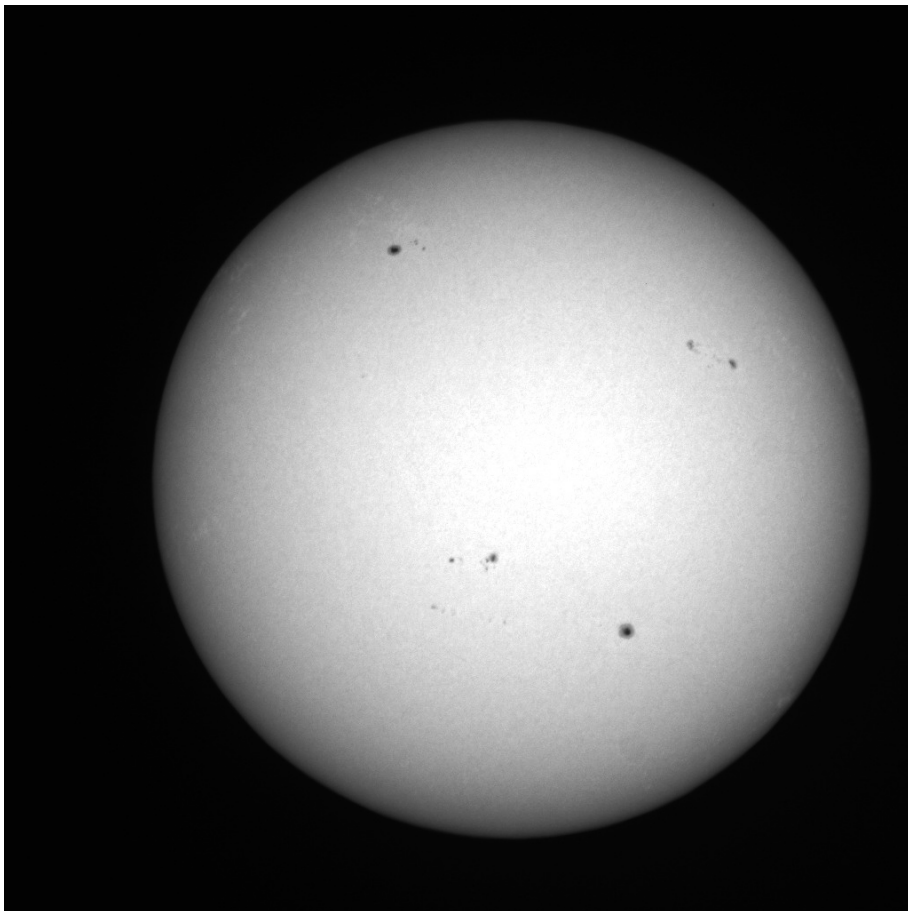
28. 12. 1998

(Datenquelle: C.E.K. Mees Solar Observatory auf Haleakala, Maui, Mees White Light Telescope,
<http://www.solar.ifa.hawaii.edu/MWLT/archive.html>)

1999: Sonnenfleckenrelativzahl (in 1. Näherung)

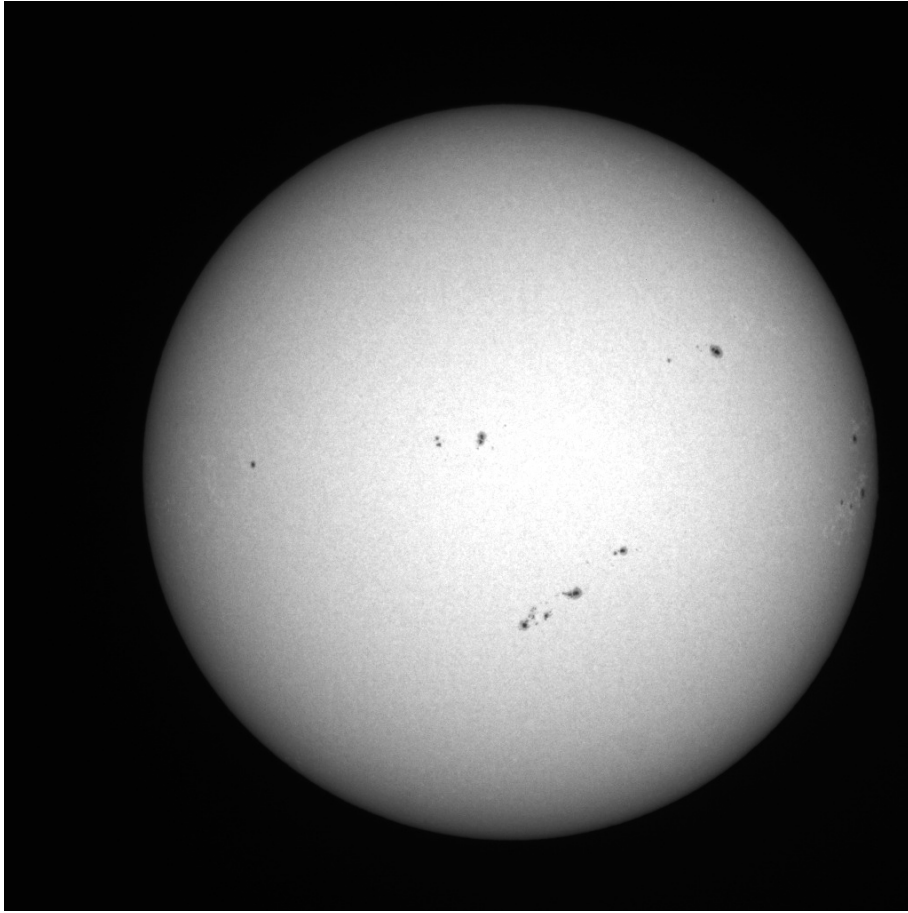


01. 06. 1999

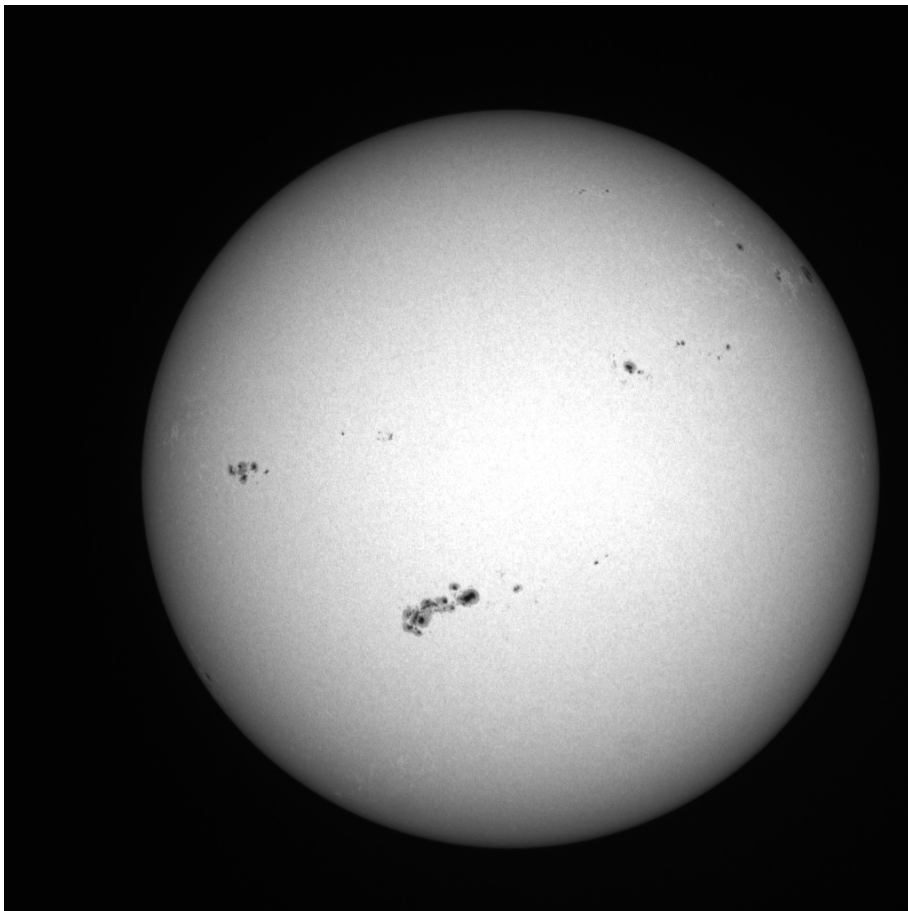


16. 06. 1999

(Datenquelle: C.E.K. Mees Solar Observatory auf Haleakala, Maui, Mees White Light Telescope,
<http://www.solar.ifa.hawaii.edu/MWLT/archive.html>)

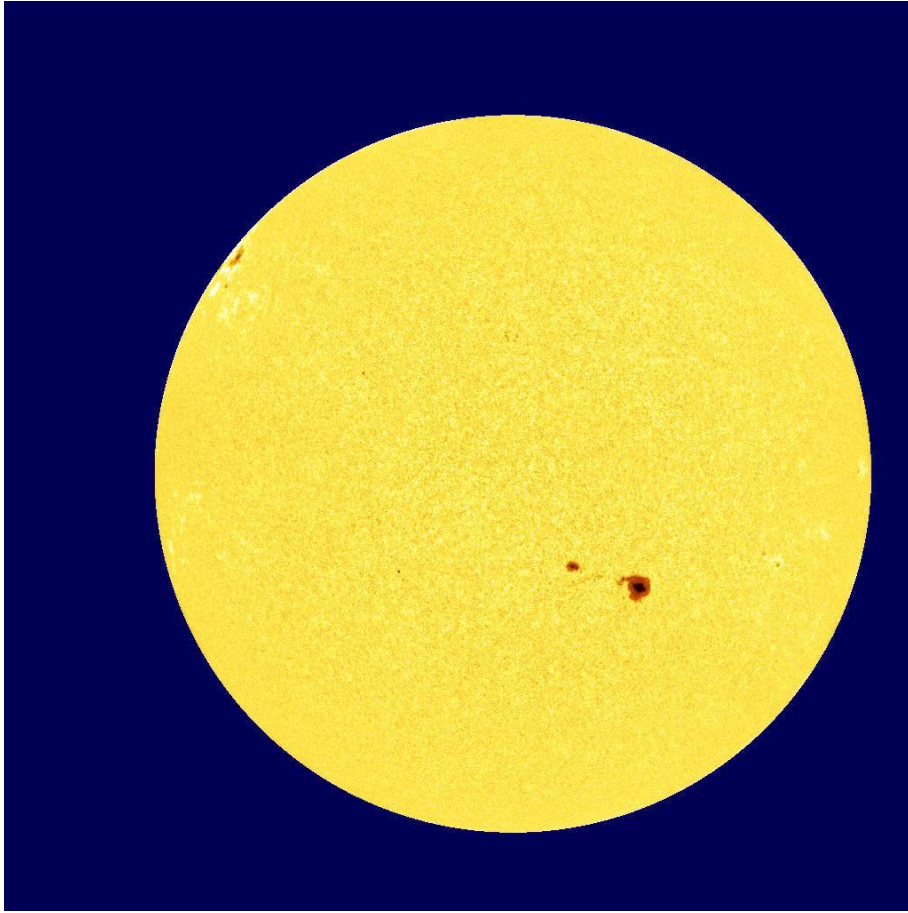


01. 11. 1999

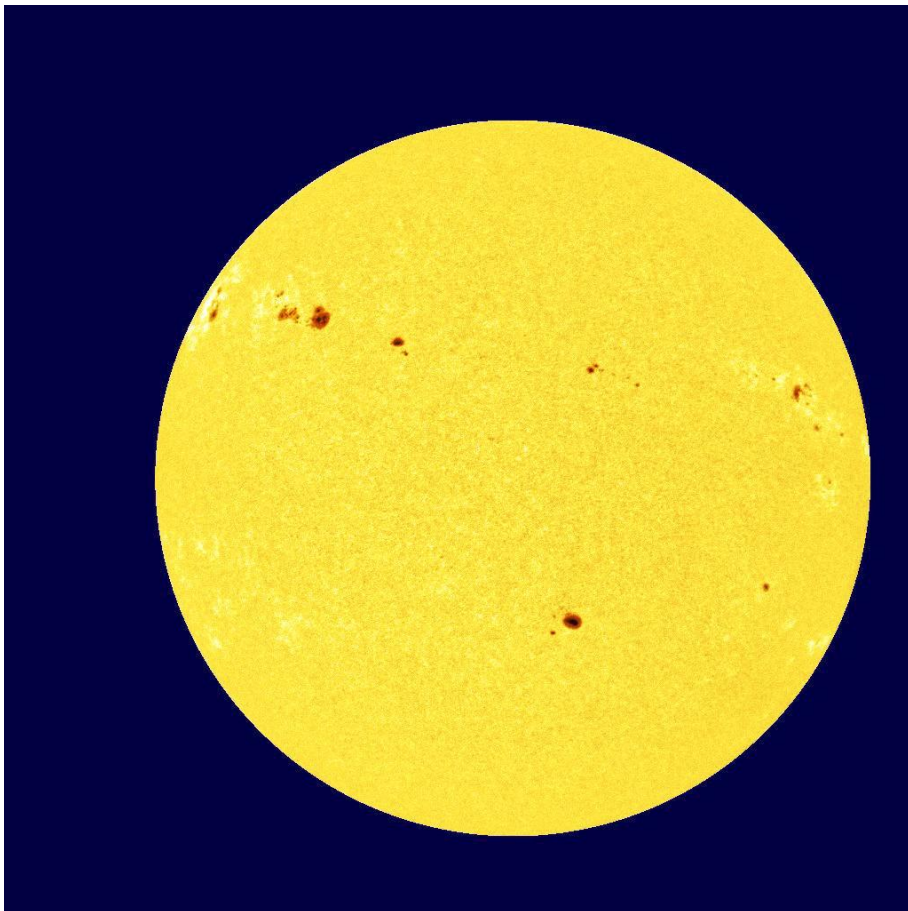


15. 11. 1999

2000: Sonnenfleckenrelativzahl (in 1. Näherung)



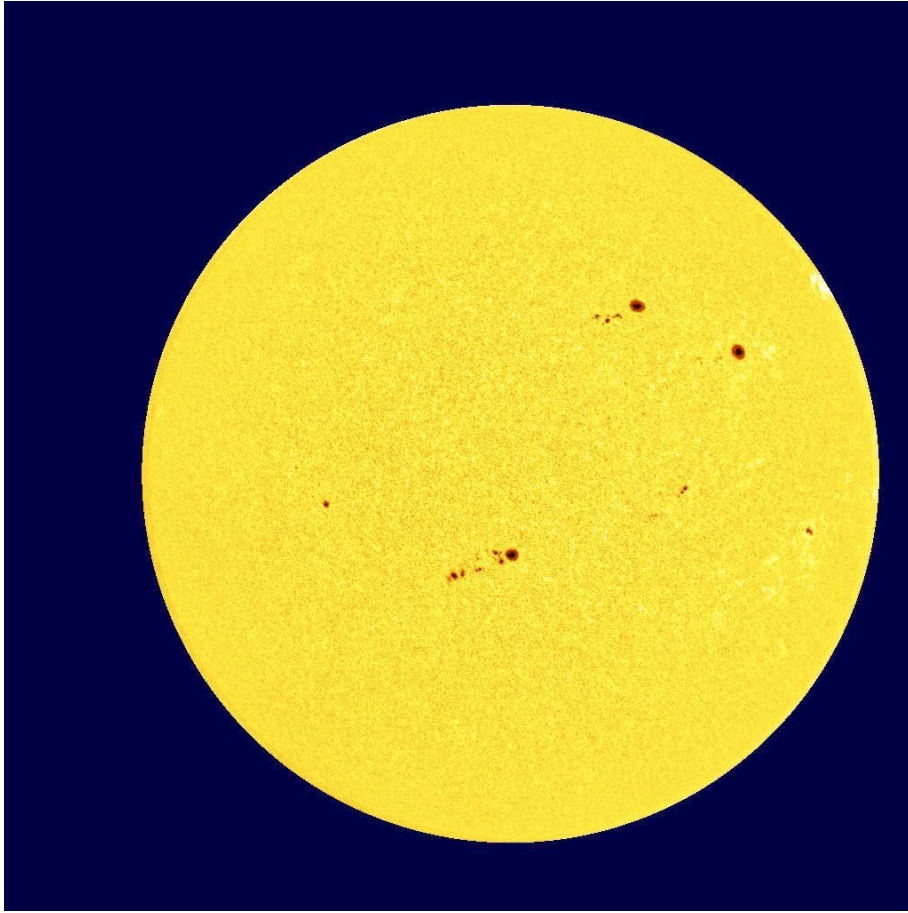
01. 06. 2000



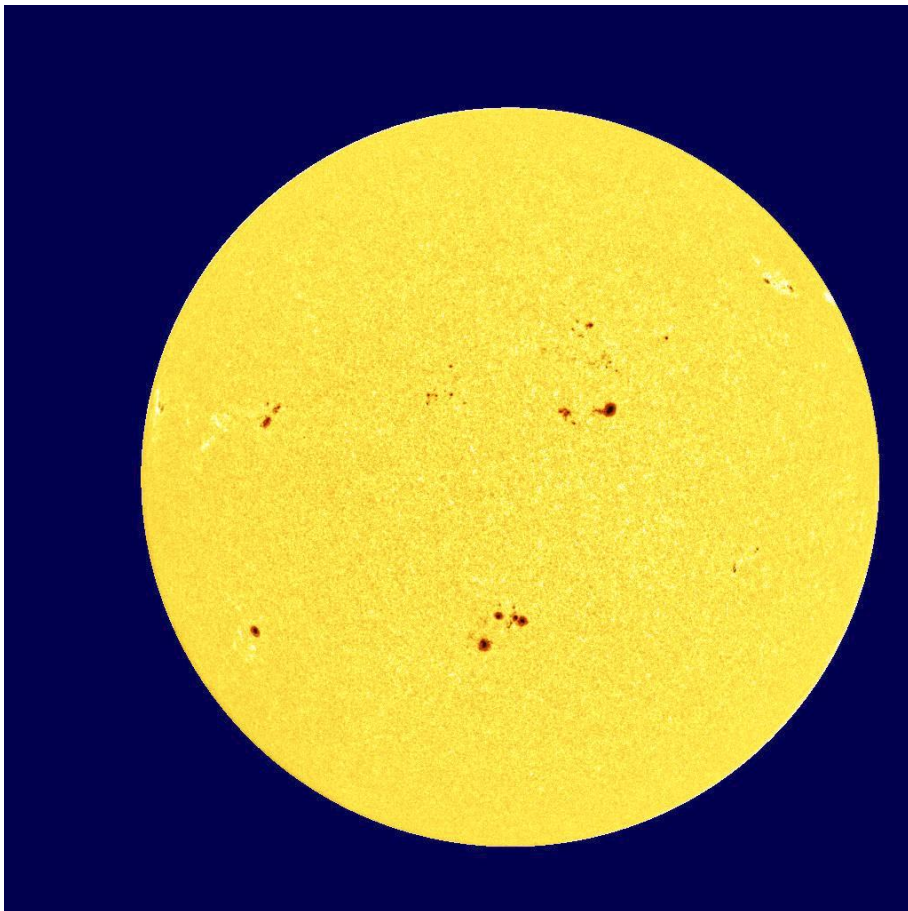
15. 06. 2000

(Datenquelle: C.E.K. Mees Solar Observatory auf Haleakala, Maui, Mees White Light Telescope,
<http://www.solar.ifa.hawaii.edu/MWLT/archive.html>)

01. 12. 2000

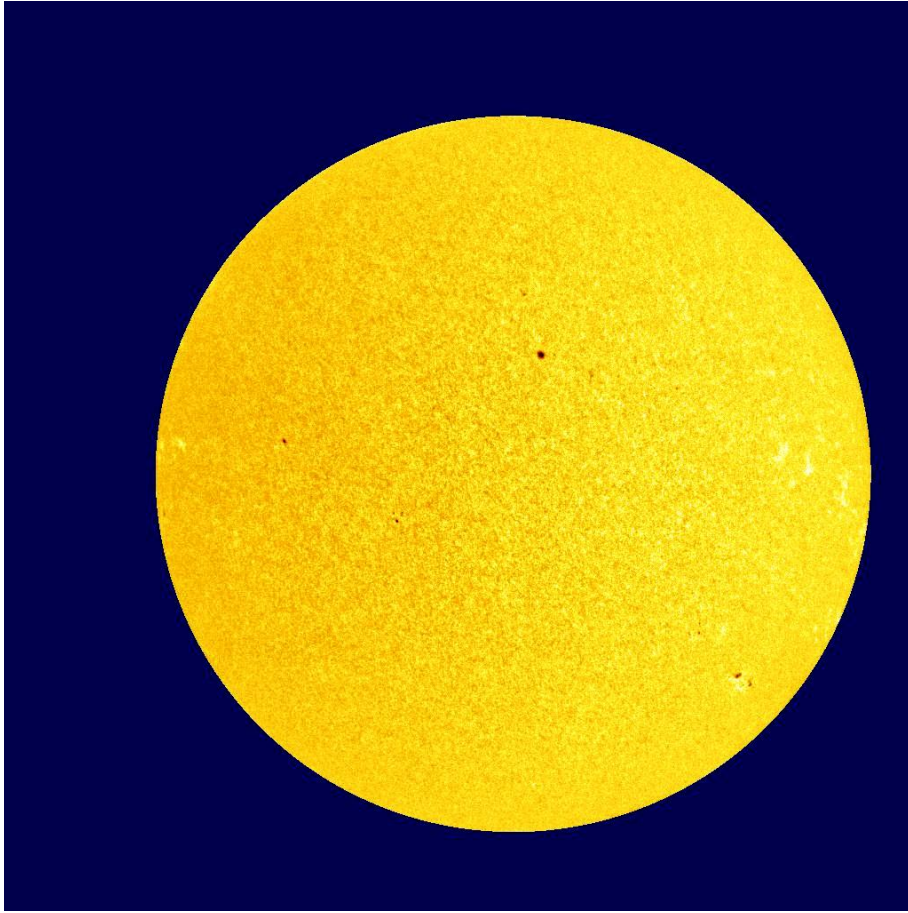


15. 12. 2000

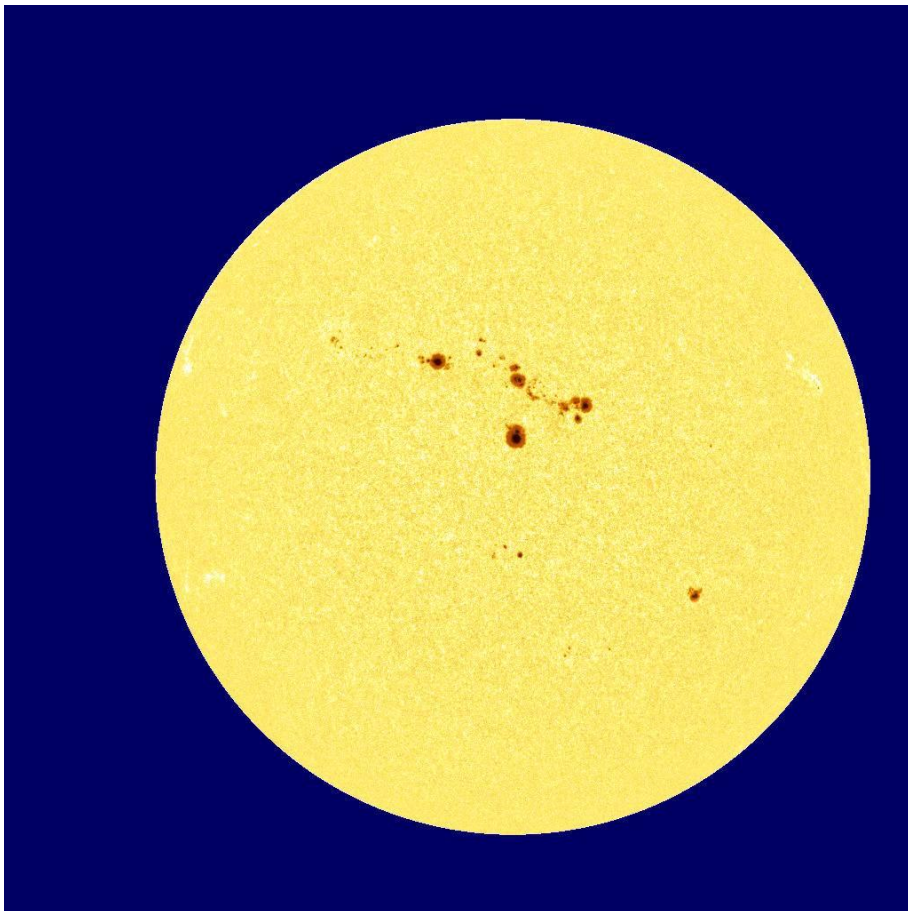


(Datenquelle: C.E.K. Mees Solar Observatory auf Haleakala, Maui, Mees White Light Telescope,
<http://www.solar.ifa.hawaii.edu/MWLT/archive.html>)

2001: Sonnenfleckenrelativzahl (in 1. Näherung)

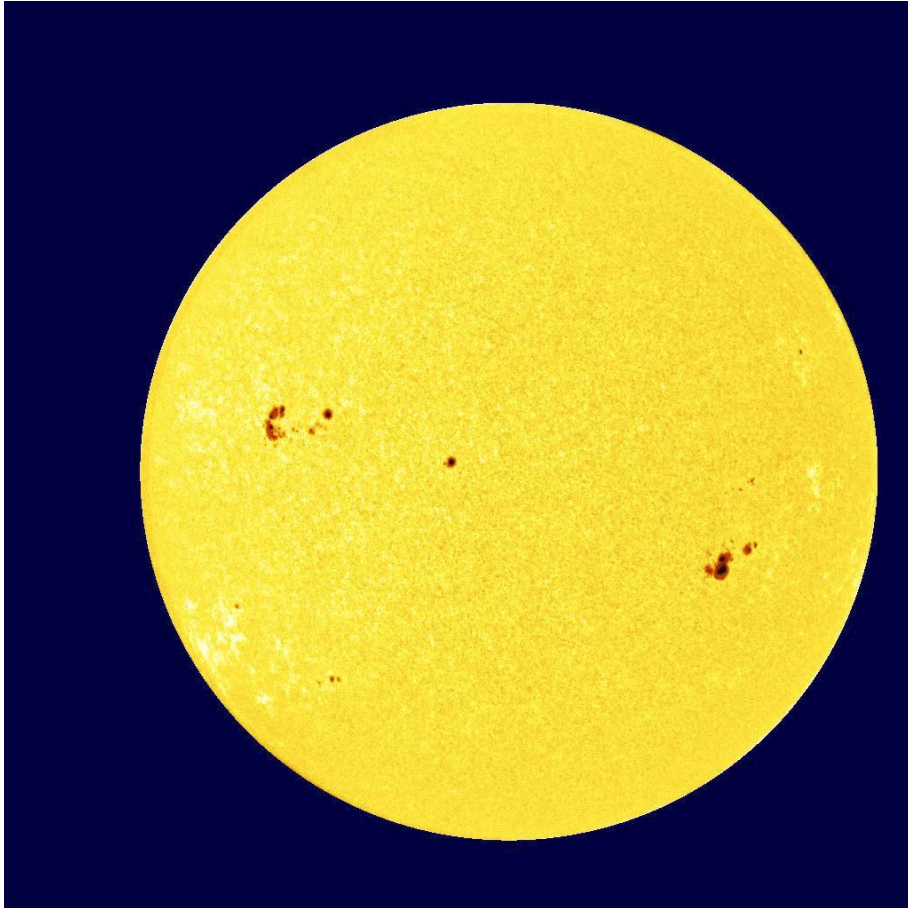


01. 06. 2001

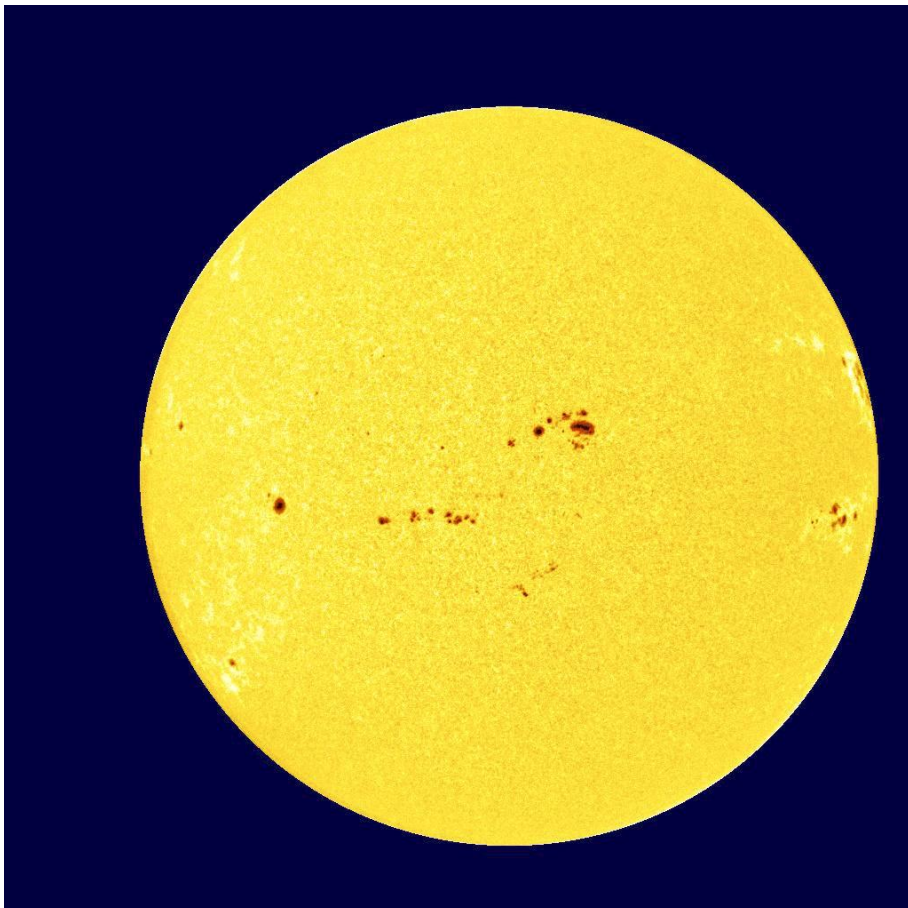


19. 06. 2001

(Datenquelle: C.E.K. Mees Solar Observatory auf Haleakala, Maui, Mees White Light Telescope,
<http://www.solar.ifa.hawaii.edu/MWLT/archive.html>)



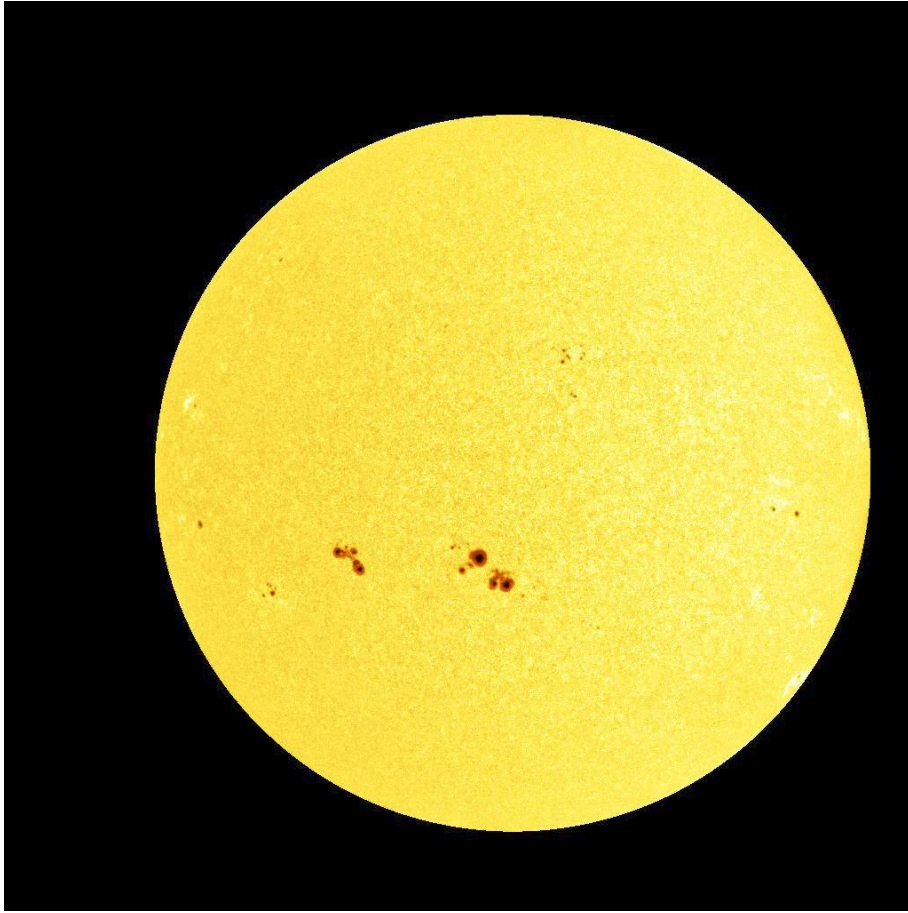
11. 12. 2001



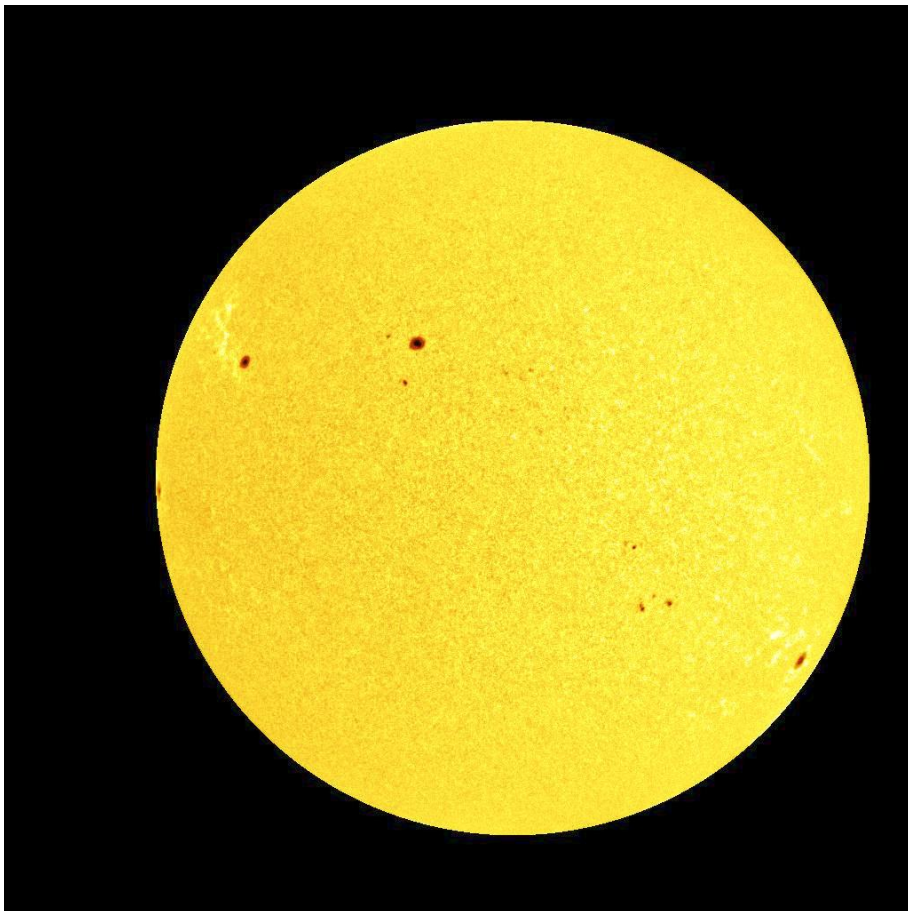
27. 12. 2001

(Datenquelle: C.E.K. Mees Solar Observatory auf Haleakala, Maui, Mees White Light Telescope,
<http://www.solar.ifa.hawaii.edu/MWLT/archive.html>)

2002: Sonnenfleckenrelativzahl (in 1. Näherung)

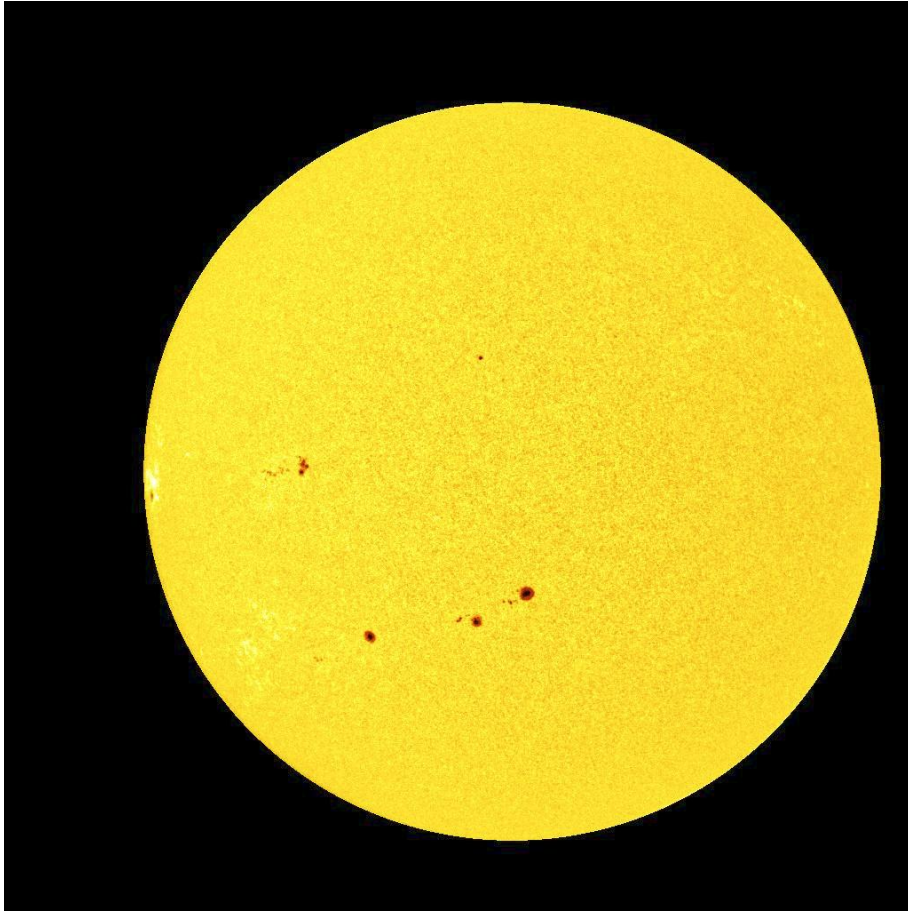


03. 06. 2002

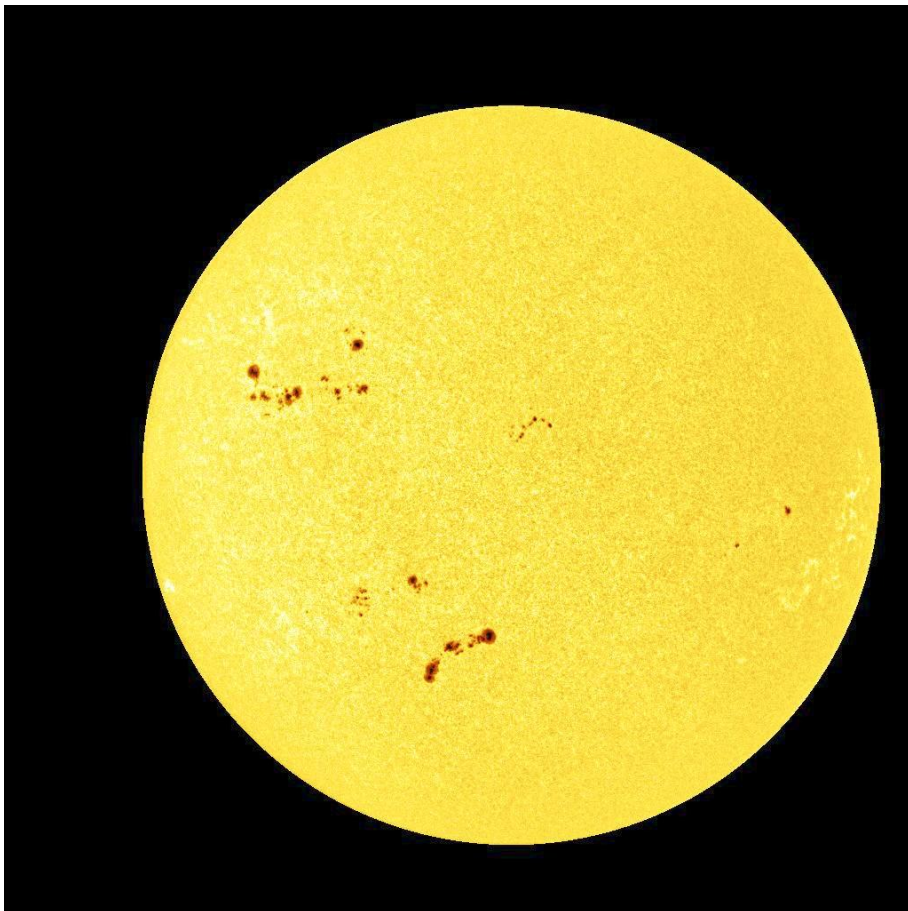


18. 06. 2002

(Datenquelle: C.E.K. Mees Solar Observatory auf Haleakala, Maui, Mees White Light Telescope,
<http://www.solar.ifa.hawaii.edu/MWLT/archive.html>)



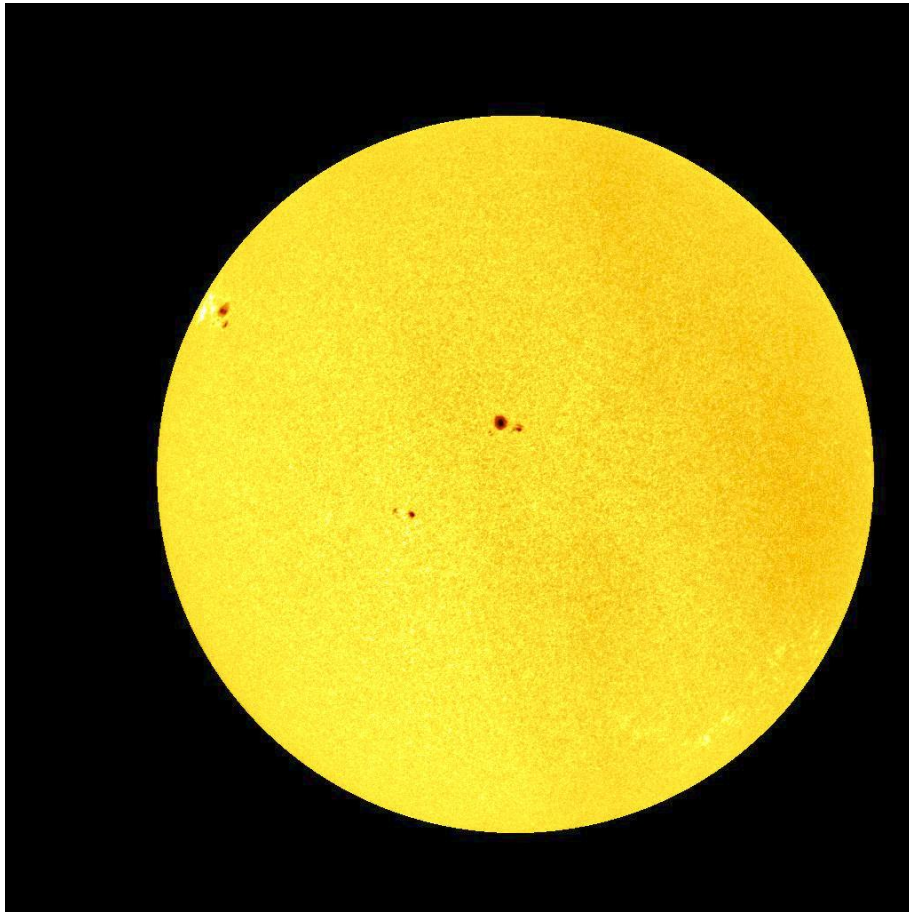
02. 12. 2002



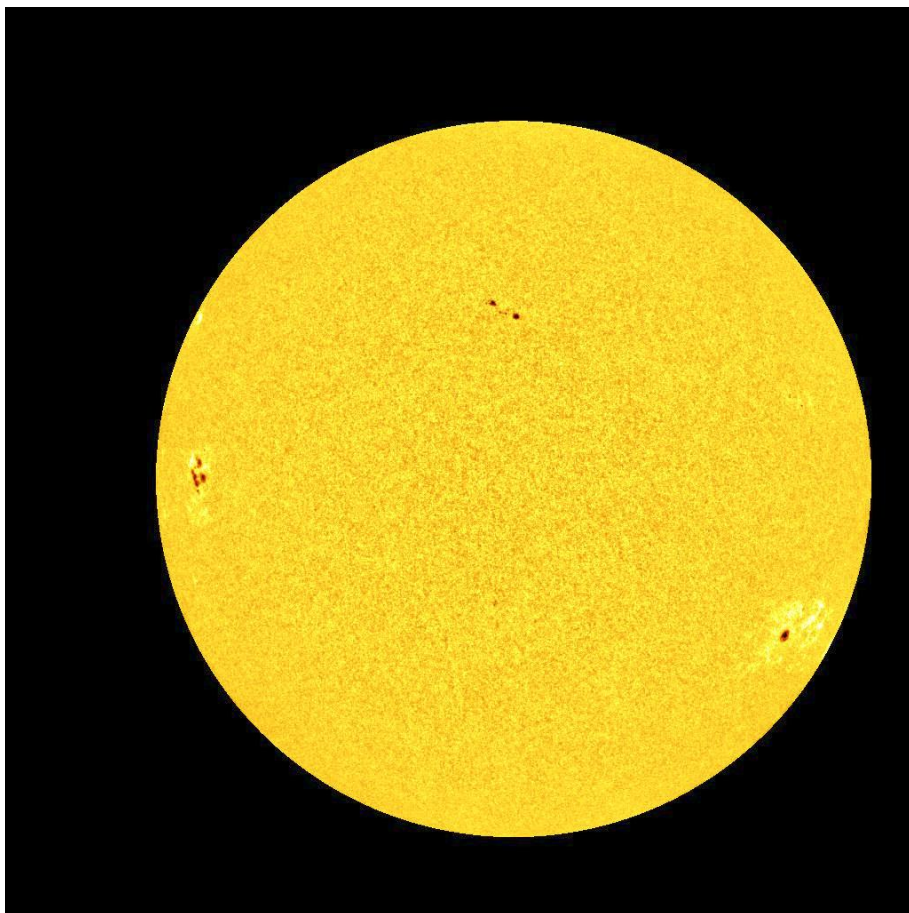
16. 12. 2002

(Datenquelle: C.E.K. Mees Solar Observatory auf Haleakala, Maui, Mees White Light Telescope,
<http://www.solar.ifa.hawaii.edu/MWLT/archive.html>)

2003: Sonnenfleckenrelativzahl (in 1. Näherung)

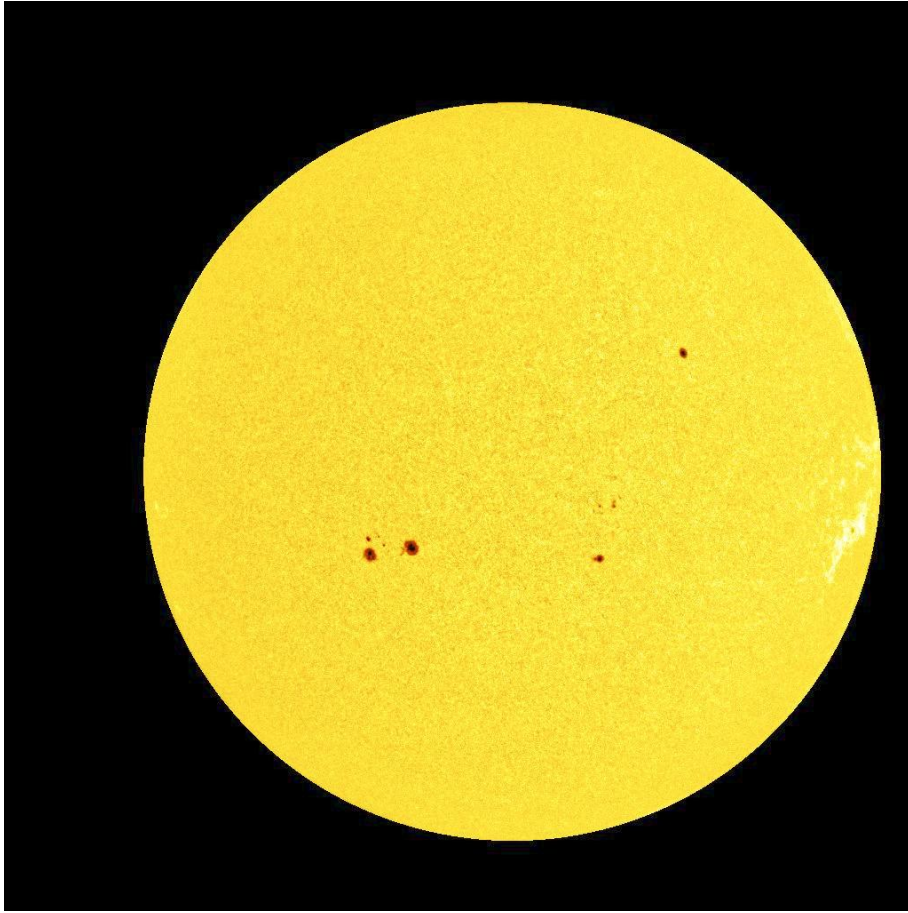


02. 06. 2003

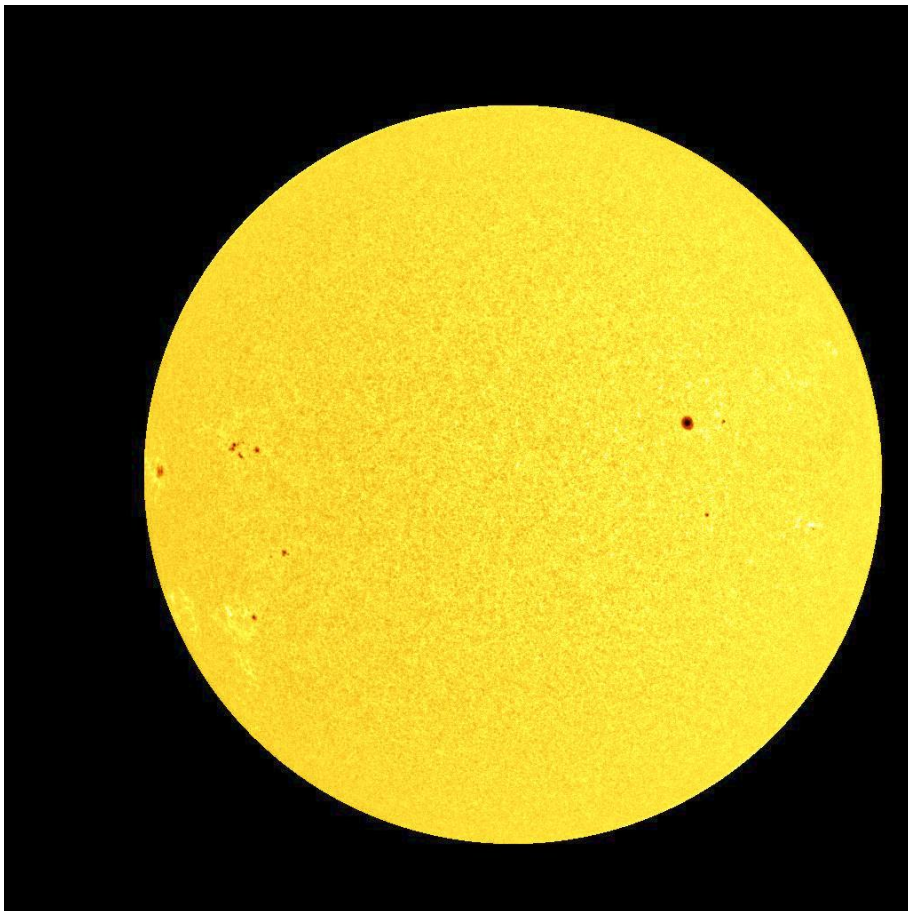


17. 06. 2003

(Datenquelle: C.E.K. Mees Solar Observatory auf Haleakala, Maui, Mees White Light Telescope,
<http://www.solar.ifa.hawaii.edu/MWLT/archive.html>)

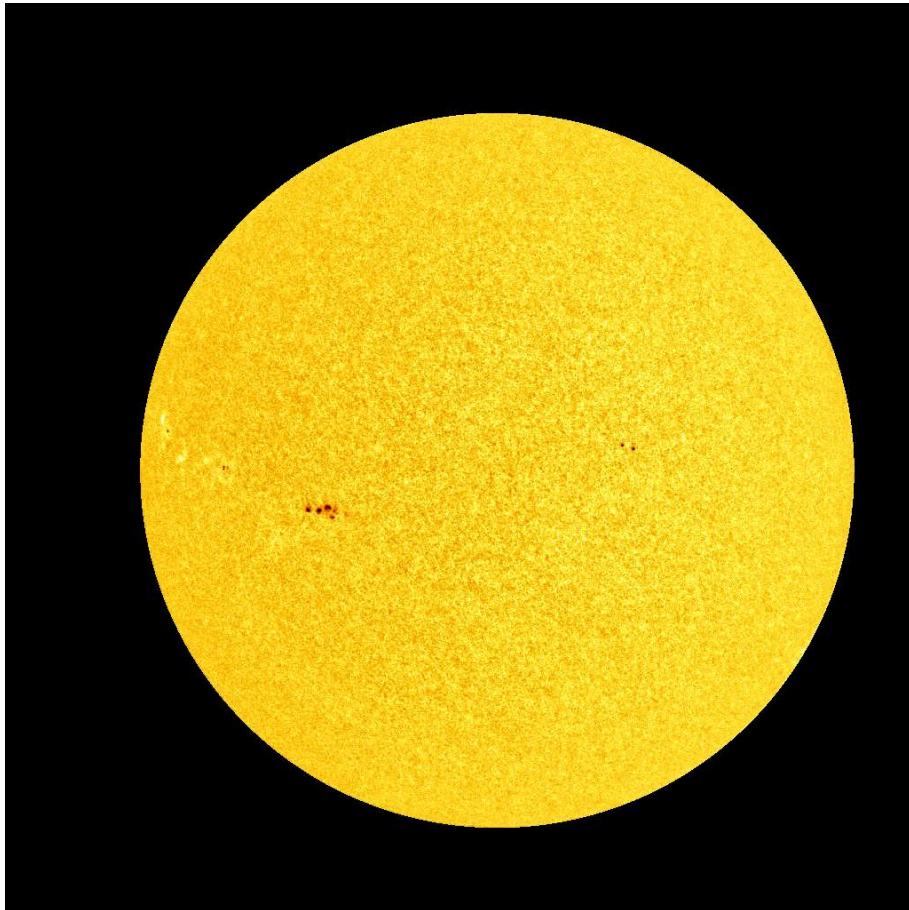


04. 12. 2003

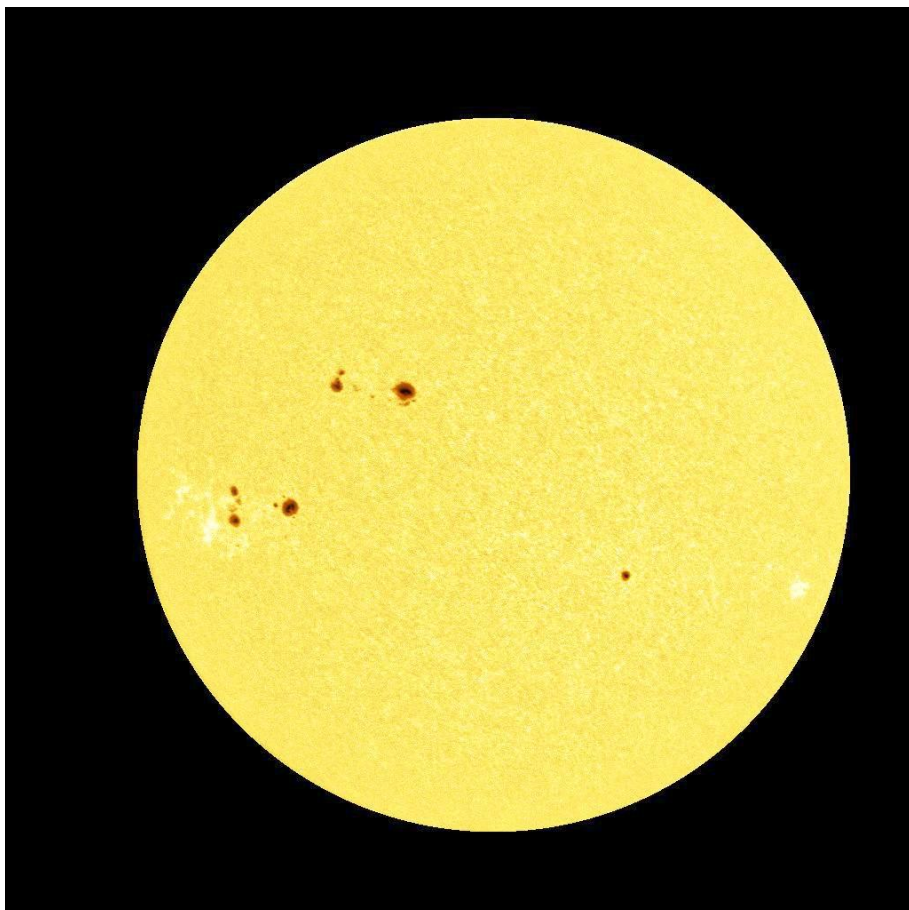


18. 12. 2003

2004: Sonnenfleckenrelativzahl (in 1. Näherung)

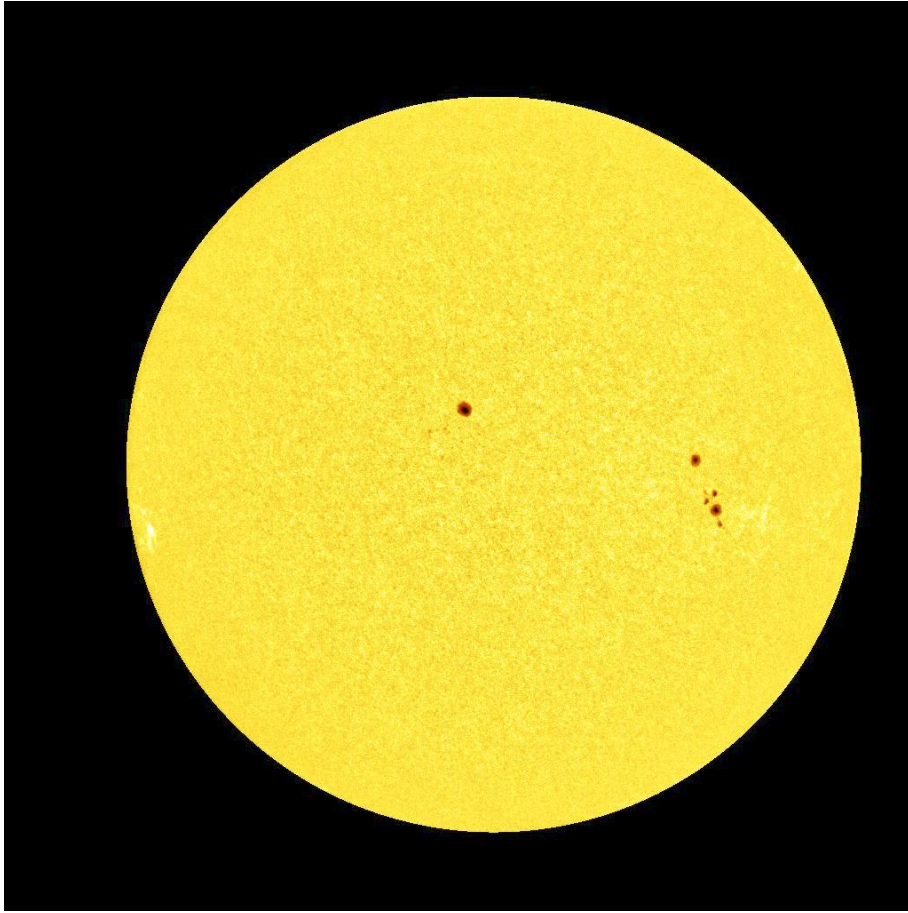


01. 06. 2004

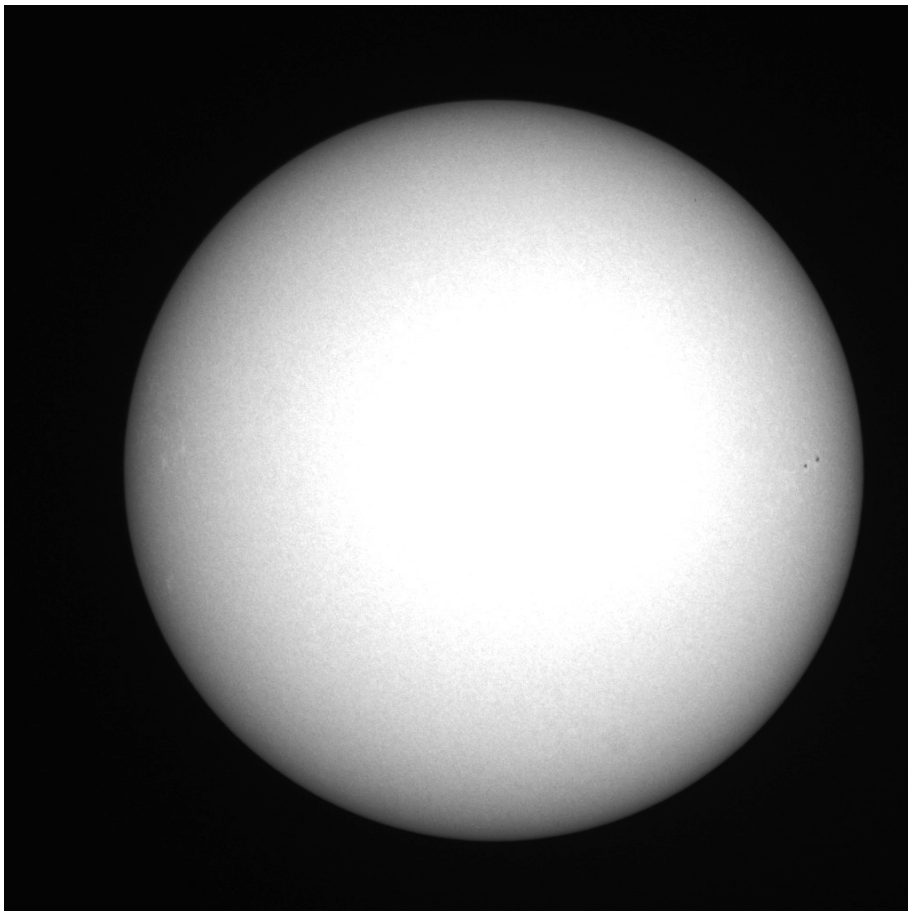


17. 06. 2004

(Datenquelle: C.E.K. Mees Solar Observatory auf Haleakala, Maui, Mees White Light Telescope,
<http://www.solar.ifa.hawaii.edu/MWLT/archive.html>)



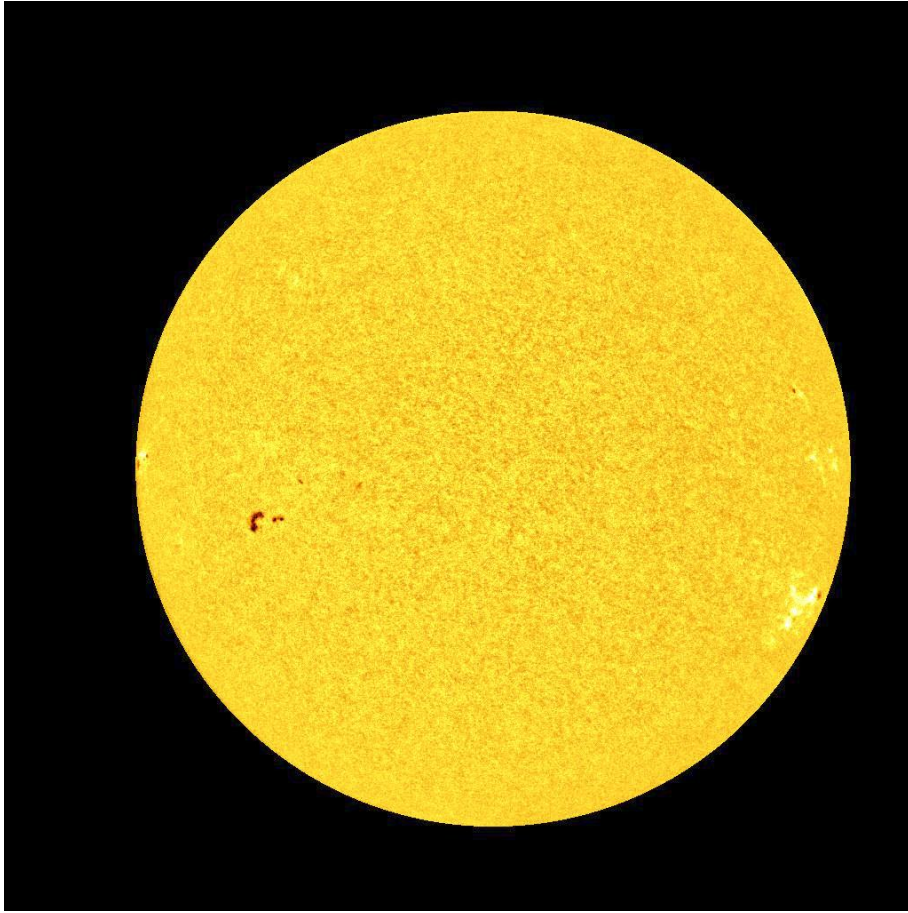
02. 12. 2004



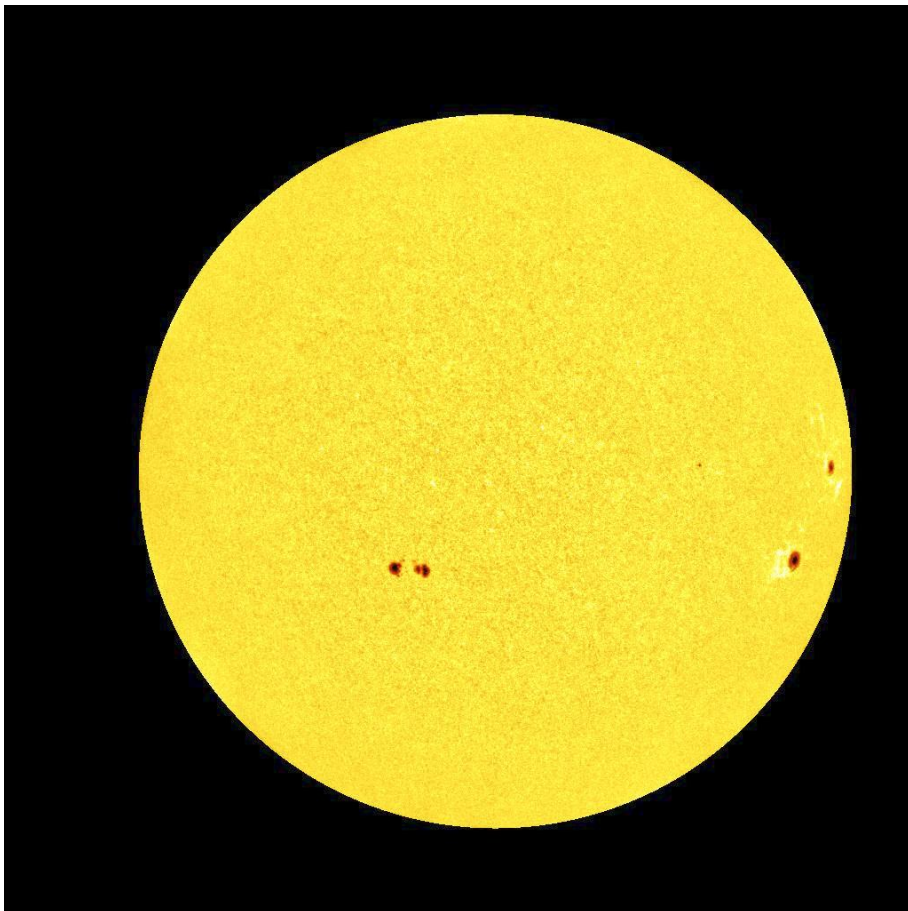
16. 12. 2004

(Datenquelle: C.E.K. Mees Solar Observatory auf Haleakala, Maui, Mees White Light Telescope,
<http://www.solar.ifa.hawaii.edu/MWLT/archive.html>)

2005: Sonnenfleckenrelativzahl (in 1. Näherung)



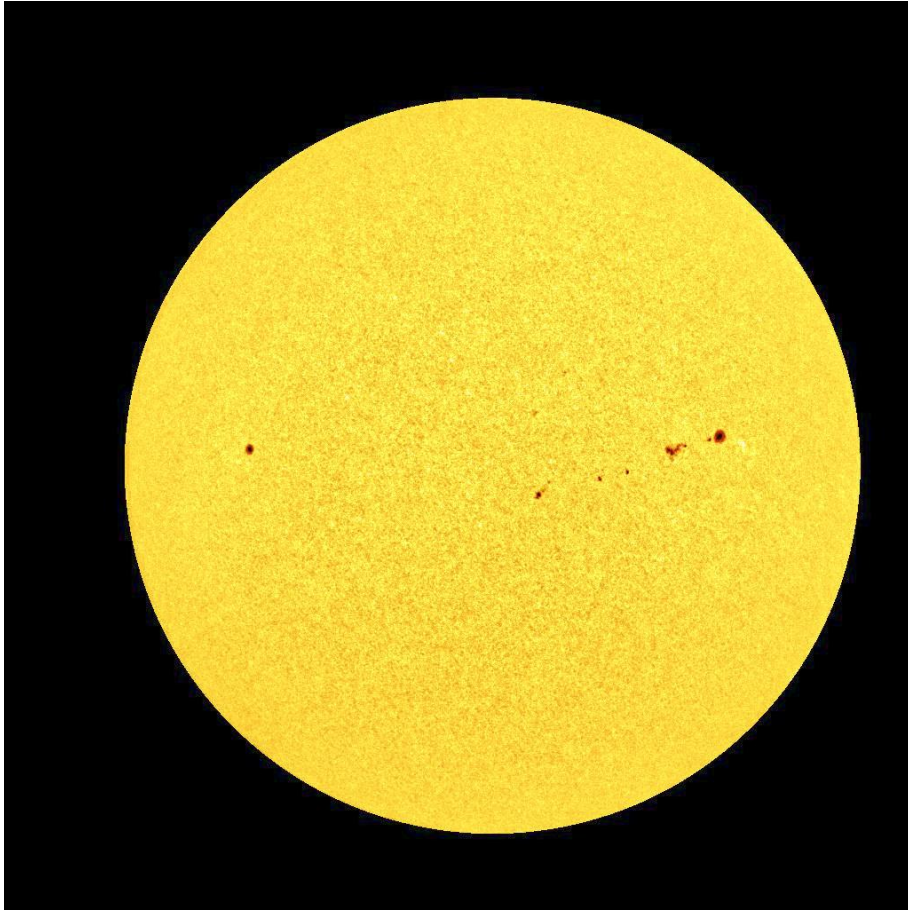
01. 06. 2005



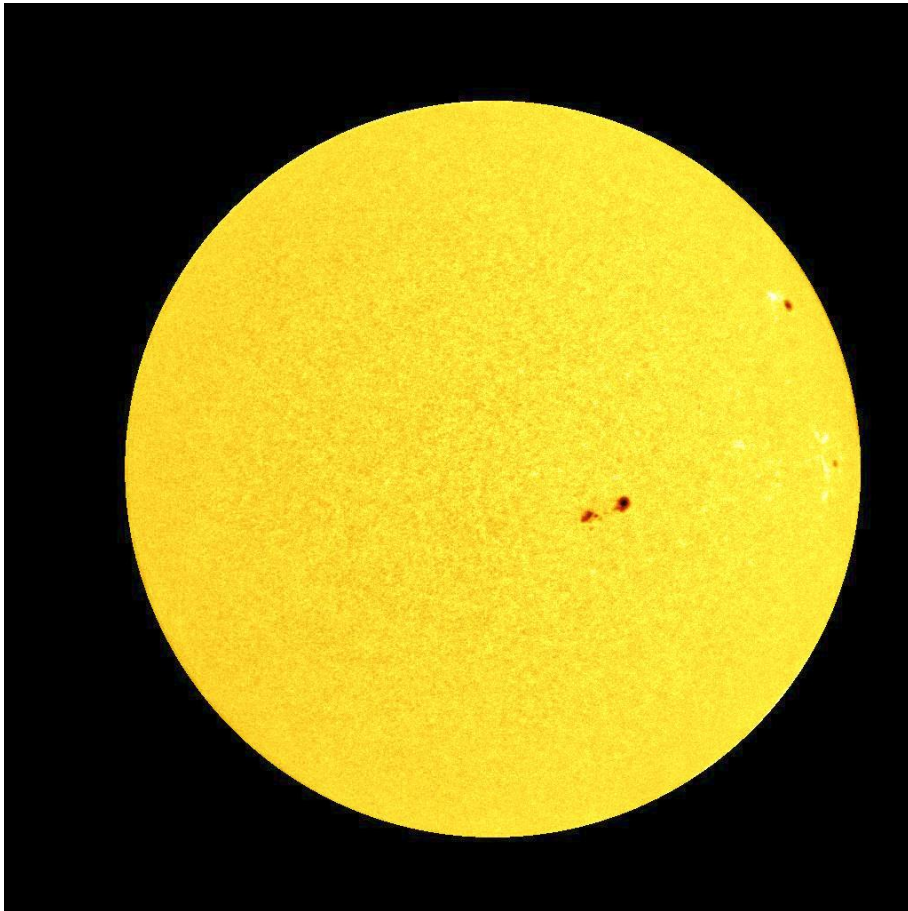
15. 06. 2005

(Datenquelle: C.E.K. Mees Solar Observatory auf Haleakala, Maui, Mees White Light Telescope,
<http://www.solar.ifa.hawaii.edu/MWLT/archive.html>)

05. 12. 2005

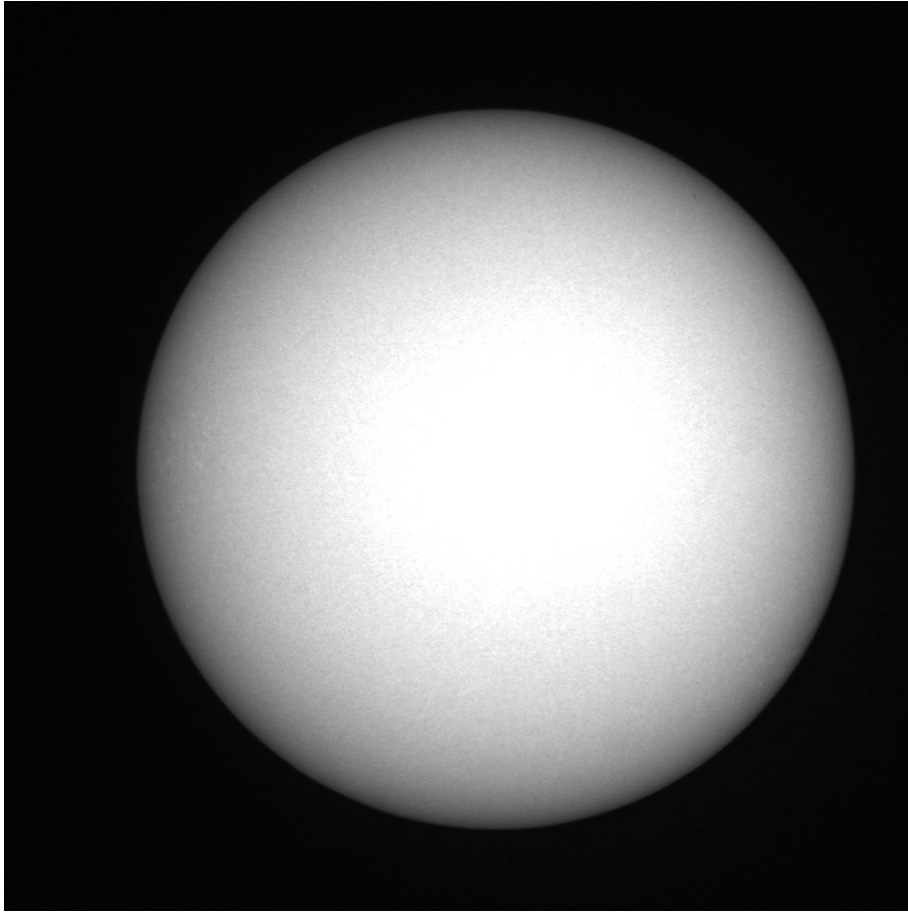


20. 12. 2005

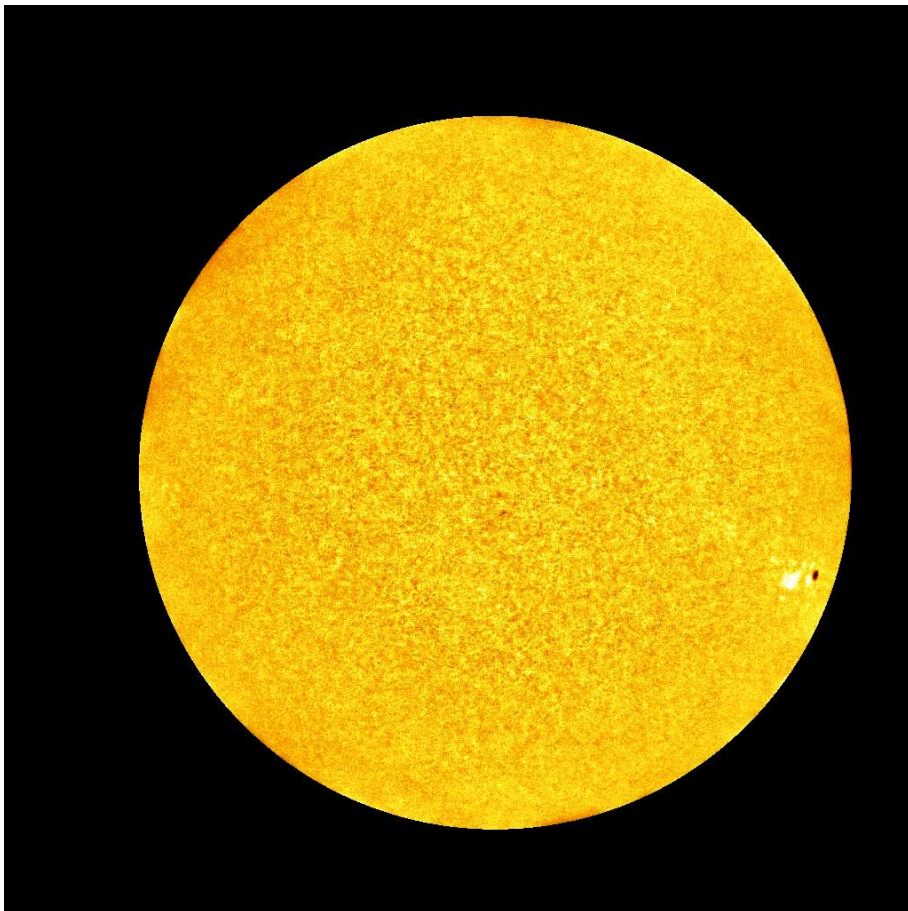


(Datenquelle: C.E.K. Mees Solar Observatory auf Haleakala, Maui, Mees White Light Telescope,
<http://www.solar.ifa.hawaii.edu/MWLT/archive.html>)

2006: Sonnenfleckenrelativzahl (in 1. Näherung)

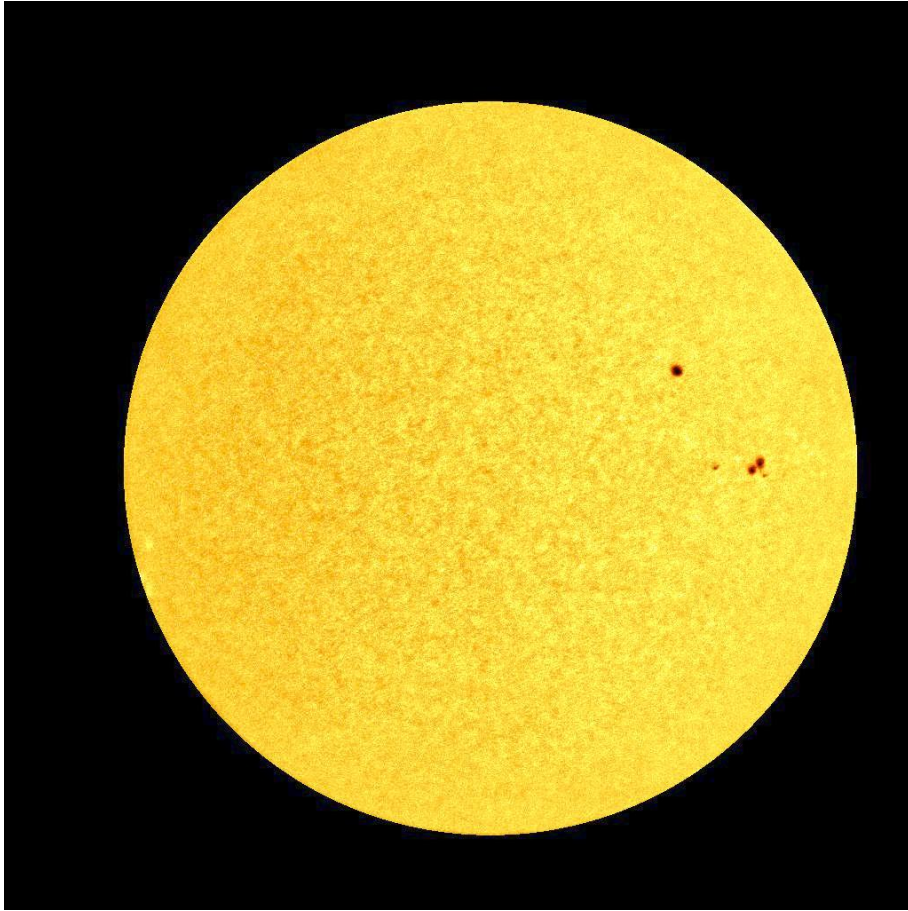


02. 06. 2006



14. 06. 2006

(Datenquelle: C.E.K. Mees Solar Observatory auf Haleakala, Maui, Mees White Light Telescope,
<http://www.solar.ifa.hawaii.edu/MWLT/archive.html>)



04. 12. 2006



18. 12. 2006

(Datenquelle: C.E.K. Mees Solar Observatory auf Haleakala, Maui, Mees White Light Telescope,
<http://www.solar.ifa.hawaii.edu/MWLT/archive.html>)